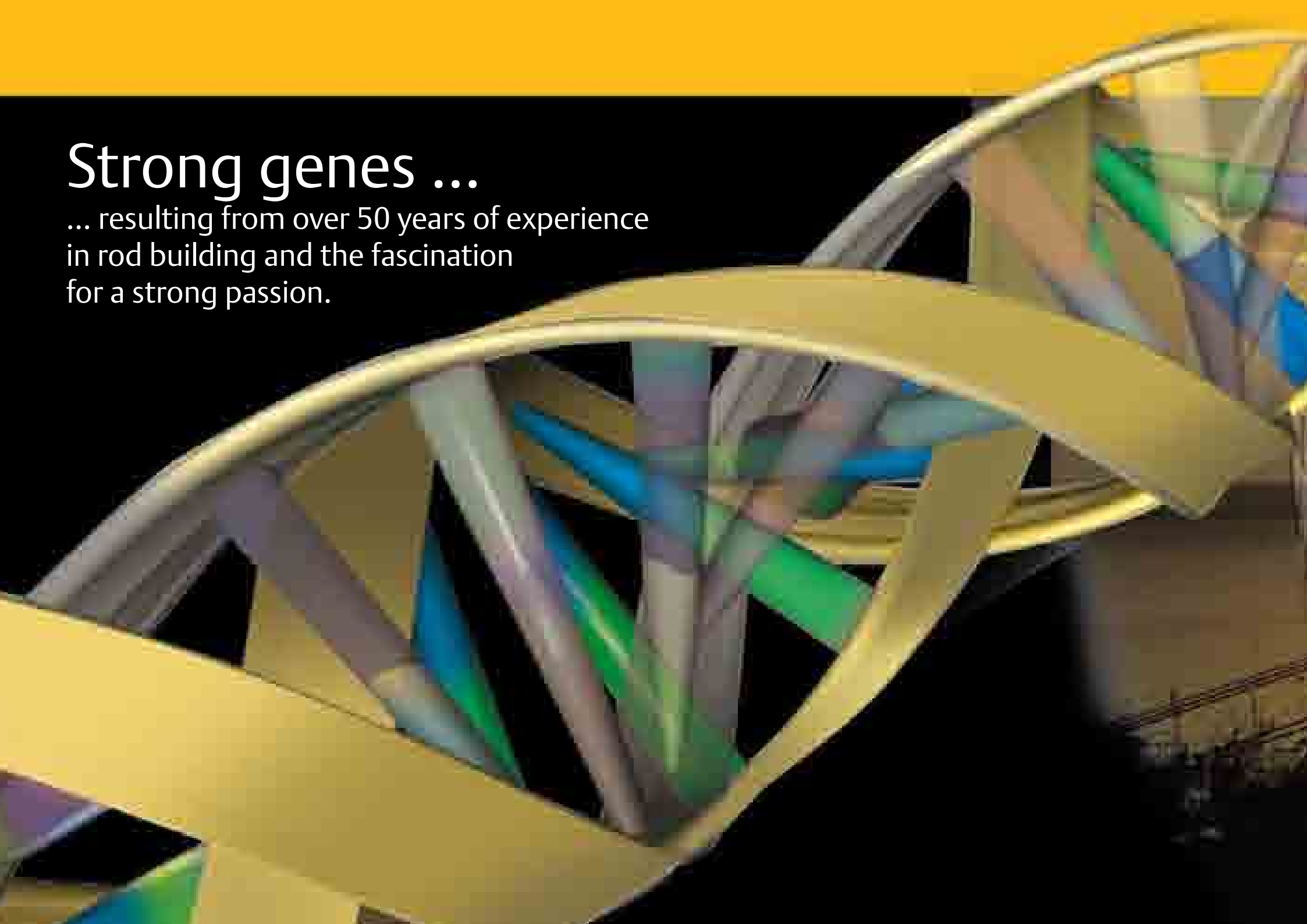
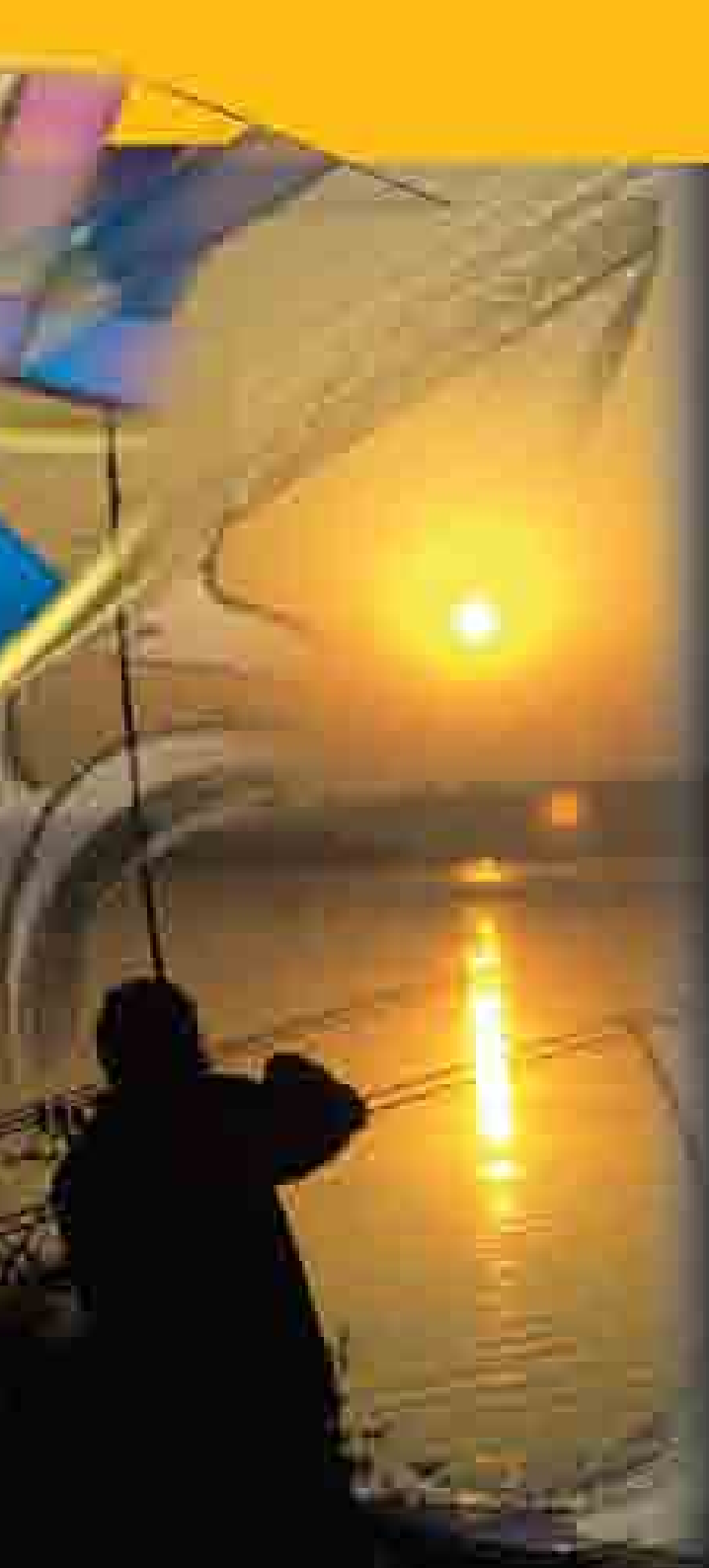


THE BENCHMARK IN ROD BUILDING

# Strong genes ...

... resulting from over 50 years of experience  
in rod building and the fascination  
for a strong passion.





### SPORTEX – a name with a long tradition

Which angler is not familiar with the honey-coloured blanks of SPORTEX rods dating back to the beginning of modern rod building? Even in those days these blanks made this brand name legendary worldwide.

With the advent of innovative carbon materials, SPORTEX recognised as one of the first the possibilities of the creation of rod blanks with unknown dynamic, strength and sensitivity qualities. The blank construction in *HT-Cross Winding-Technology*, which is still unique today, gives SPORTEX rods their unique semi-parabolic, powerful tip focussed character, which brings the bait to the fish and makes sure that the fish is delivered into the landing net. First-class rods, known worldwide for their enormous breadth of abilities.

### High-tech for your passion

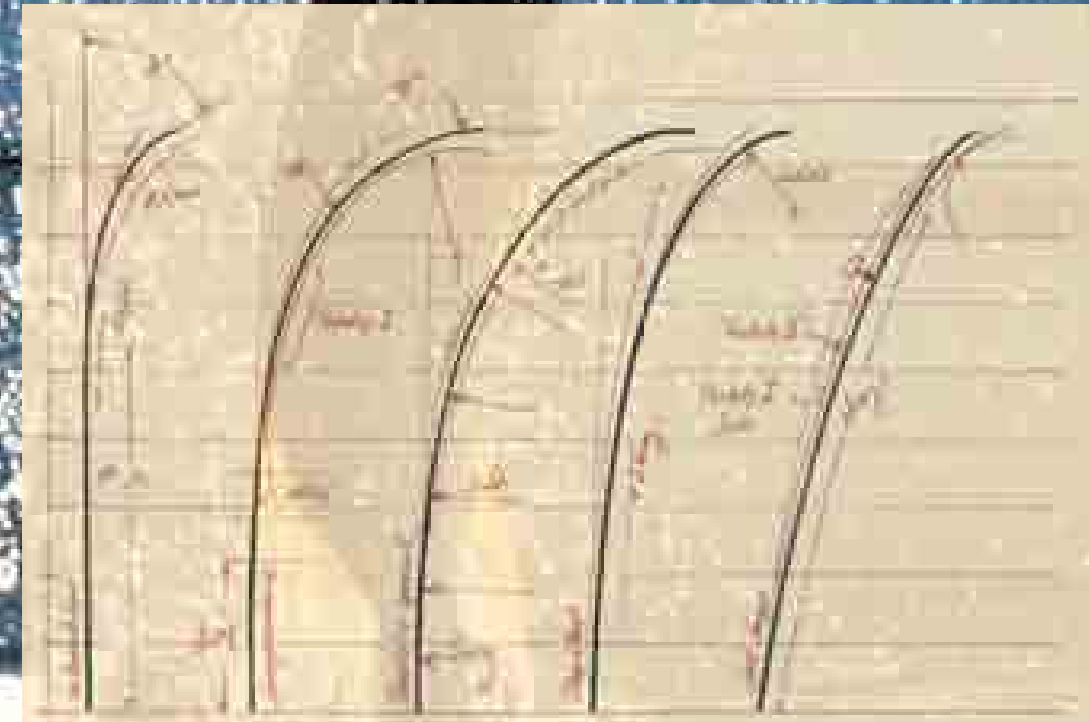
Do you want high technology which is unmistakable and will continue to work for years like on the first day? Then SPORTEX rods should be part of your fishing equipment. Thin, in a timeless clear design and functionally fitted with excellent components signalise professionalism and taste..

### SPORTEX – rod programs 2010

This year we have expanded our programme with selected, first-class rod series. The unique action character and the high-quality workmanship all conform to the SPORTEX tradition known throughout the world.

#### Content:

SPORTEX – the dynamic for the large catch	4-5
TiBoron rods	6-7
Kevlar rods	8-9
Carat Z rods	10-11
Saphir rods	12-13
Carboflex NG rods	14-15
Black Stream rods	16-17
Opal rods	18-19
Special rods	20-21
Carp rods	22-27
Landing nets	26-27
Waller rods	28-29
Feeder and coarse angling rods	30-31
Trout, match, float and hegenen rods	32-33
Surf rods	34-35
Boat, jigging and sea rods	36-39
Super Safe rod cases	40-43



## The action

It determines the “soul” of a rod. The action typical for SPORTEX conforms to the dynamic of the successful angler. Thanks to the *HT-Cross Winding* composite technology the energy used is transferred to the tip of the rod without delay through the powerful slim blank. This provides greater accuracy, better contact to the lure, total confidence whilst playing the fish and maximum amount of reserve power. Slim and perfectly balanced; these rods sit lightly in the hand for a long, tireless day of angling.



## The rod material

SPORTEX-Rods are made from the best materials available today. SPORTEX has put a great deal of work into developing the actual fibres that modern rod blanks are made from. We have 60 years experience in the development of glass fibre. This is still in use today in special applications such as our robust sea rods (Magnus series) or our ultra tough catfish rods (Baltic/Wolga series).

SPORTEX was one of the very first companies to utilise carbon fibre, an irreplaceable material that has been in use for decades. We only utilise fibres of the very highest quality, the same fibres used in aerospace technology. And SPORTEX is one of the few companies that use alternative fibres when manufacturing rod blanks, always providing these bring tangible advantages for the angler.

We have been using KEVLAR® for about 20 years now. The blanks of our KEV-Series rods are made of 50% Kevlar and 50% best quality carbon fibre. These legendary rods are a favourite with professionals the world over.

We have also been using BORON-fibres since 2006. Boron has unbelievable strength, with the result that our TiBoron rods, a combination of BORON and carbon fibre, are extremely light, fast and incredibly powerful.



ZYLON is the hottest new material being used to develop SPORTEX blanks. We have been developing this fibre for the past two years and are happy to present the first ZYLON Rods. ZYLON is an aramide and it makes our CARAT Z series quite exceptional. ZYLON is a dream combination when layered with carbon fibre, resulting in very special rod blanks. These rods are practically unbreakable, but fantastically light, slender and fast. This material is a huge advance over glass fibre which, though hard to break, often results in heavy and soft rods.

The proverbial SPORTEX quality is guaranteed through the most careful workmanship during the production. The carbon fibres are put unidirectionally onto the core of the rod, so that they run broadly parallel to the axis of the rod. This provides more strength and more stability with a small blank diameter, as compared to laying the fibres in the usual spiral form. In addition, these bundles of fibres are wrapped crossways with high modular carbon bands. These fibre links are slowly heated in several computer controlled stages and cooled down the same controlled way. The result is a 100% perfectly hardened blank, which even with the toughest use maintains its elasticity and resilience. Through this process every SPORTEX blank remains the same for a lifetime when in action. This very time-consuming process is carried out by very few manufacturers for cost reasons, but guarantees SPORTEX rods their durability and reliability.

## *HT-Cross Winding-* Technology

It is not just the optical feature of every SPORTEX rod. Unlike other rods, which just use it for decoration, strength and durability is guaranteed with SPORTEX though a 100% bound carbon fibre winding during its manufacture.

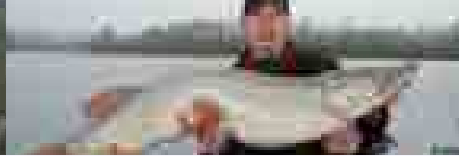
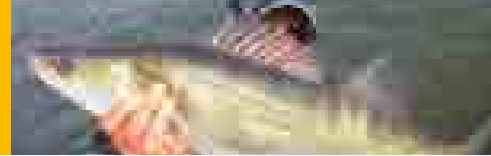
## The fittings

### **High-quality and functional**

An attribute of every SPORTEX rod is its clear, timeless design, which also signals quality and superiority, even after many years have passed. Everything about the fittings, from the high-quality material, from the workmanship of the blanks, the careful assembly of the components to the lacquering is conceived with durability in mind and lovingly carried out in the tradition of craftsmanship. This, together with the successful use of strength of innovation and with the most up-to-date rod building technology, have defined for generations the image of the SPORTEX brand worldwide.

**Therefore we provide a 10 year guarantee for blanks.**







# SPINNING RODS



## TiBoron

**10 year  
Blank Guarantee**



Fuji guides for an optimal action curve

### Application:

With a casting weight of 20g to 60g and lengths of 240cm to 305cm these rods are well-suited to spin angling. In the shorter lengths they are ideal for angling from a boat, in the longer lengths they are perfect for spin fishing for bass, zander, pike, sea trout, salmon and pollock.

### Configuration:

- High-tech modular carbon fibres with a high proportion of Boron
- Fuji SIC guides with high abrasion resistance and heat dissipation
- SPORTEX Balance System S-B-S
- High-quality, machined aluminium reel seat with laser engraved serial number
- Red burl wood appliqué at the handle and the reel seat
- Computer optimised rod balancing in the end cap
- High-quality natural cork handle in premium quality AAA
- Aluminium cap with engraved red burl wood appliqué



Premium cork, high-quality aluminium cap and valuable wood appliqué make for a design experience



Innovative: integrated balanced weight for an individual feeling



### No Limit – high-end spinning rods in the superlative

With this rod series, SPORTEX has realised the vision of every spin fisherman. The unique combination of materials made from HM/IM carbon fibres and Boron\* makes for a dream combination of lightness and resilience, paired with unbelievable reserve of power. With this rod series we put into the hands of spin fishermen ultra fast and powerful rods, which in function and design belong to the best on the market. The slender blanks finished to the highest level of craftsmanship have a timeless high-quality design, red burl wood appliqués on the handle, machined designed metal end caps as well as high-quality Fuji SIC guides with high heat dissipation and exclusively designed reel seats, which all makes up these high-performance rods. **The special attraction for spin fishermen!** Through the integrated weight in the handle every rod is perfectly balanced. It sits like a feather in your hand.

\*Boron is one of the hardest materials in the world. It has the highest tractive force of all known chemical elements. For the finishing on SPORTEX fishing rods boron layered HM/IM carbon fibres are used. They combine all the best attributes of both materials.

Model	Art. No.	Model-Name	Length cm	pieces	Transport length	Casts gram	Tolerance	Rod weight gram	Guides	Price** euro
TiBoron	180211	TB 2101	210	2	109	10	5 - 14	141	8	399,00
TiBoron	180241	TB 2491	240	2	124	20	9 - 28	181	9	419,00
TiBoron	180271	TB 2791	270	2	141	20	9 - 29	197	9	435,00
TiBoron	180242	TB 2492	240	2	123	40	26 - 48	197	9	430,00
TiBoron	180272	TB 2792	270	2	141	40	28 - 48	208	9	450,00
TiBoron	180273	TB 2793	270	2	140	60	37 - 71	216	9	469,00
TiBoron	180302	TB 3092	305	2	156	30	12 - 36	217	11	499,00

\*\*recommended retail price



#### **Kev Spin Light**

**weight 15 – 20 grams**

Wonderful light spinning rod for trout, bass and chub. Thanks to the S-B-S System it sits like a feather in your hand.

#### **Kev Spin**

**weight 30 – 35 grams**

With a casting weight of 30 and 35 grams and lengths of 240cm to 300cm these elegant, slender rods are suitable for every type of angling for predatory fish. In short lengths they are ideal for angling from a boat or on banks with vegetation, in longer lengths they are perfect for spin fishing from the riverside, e.g. for bass or zander. Due to its exclusive fittings, it is an optical highlight with unique performance. Thanks to the S-B-S System it sits like a feather in the hand.

#### **Kev Spin**

**weight 60 grams**

Created for medium weight angling for predatory fish with lengths of 270cm and 300cm, and a casting weight of 60 grams they are perfect for capital zander and medium-weight pike fishing. The S-B-S System makes for a tireless day of angling. You will feel the difference.

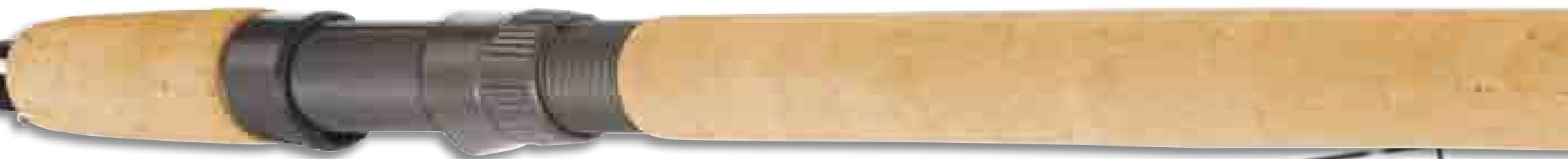
#### **Kev Pike**

Are you looking for the best rod for spin fishing for pike? These are the absolute specialists which come in 2 lengths. The perfectly balanced blanks have a strong, flexible spine with an active tip which reports each bite instantly and sets the hook in a flash. Due to their typical action for SPORTEX Kevlar, they can cast light to heavy soft baits, as well as heavy spoons and lures. These rods are also ideally suited to troll for pike. The S-B-S System makes for a tireless day of angling. You will feel the difference.

*“Playing a large fish, I am always amazed anew, how powerful the Kev Pike is. Even at the limit, you feel on the safe side with this rod. No matter what you fish for – large pike or salmon – this rod gives every fisherman the reserves required to play every fish successful.”*

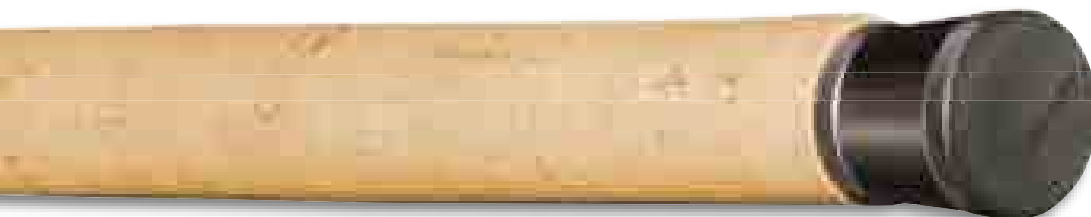
*Markus Heine, deputy chief editor Raubfisch, Germany*

# SPINNING RODS



**10 year  
Blank Guarantee**

Kev Pike



Kev Spin

## KEVLAR rods

**The power combination made from Kevlar and carbon for even more strength and reliability**

These high-quality, almost unbreakable rods have been synonymous for years with lightness, stability and strength. Thanks to over 30 years of experience in the building of Kevlar rods, with this rod series we were able to optimally combine the lightness and breaking strength of Kevlar with the resilience and rigidity of carbon fibres. This material mix is made up of 50% Kevlar and 50% high-quality HM carbon fibres and makes for extremely light blanks with a strong spine. The organic action curve from the butt to the tip provides accurate casting and controlled playing with the fish, both close at hand and further away. The special feature of this rod series is the extreme conductivity of movement impulses. Its fittings with the finest cork, Fuji SIC guides as well as Fuji reel seats make this rod a high-light for every set of angling equipment. All SPORTEX KEV rods feature the new, innovative SPORTEX Balance System S-B-S – integrated in the screwable end cap. Perfectly balanced dream rods, especially designed for intensive casting.

### Kev Sea Spin

Created for heavy predator fish and light pilk angling with lengths of 270cm and 300cm and a casting weight of 100 grams, they are perfect for the hunt for large pike, cod and large salmon. Whether for light pilk fishing in the Baltic Sea or angling for predatory fish with heavy bait at the bottom, the Kev Spin is your choice. Thanks to the SPORTEX Balance System S-B-S it sits like a feather in your hand.



SPORTEX Balance System S-B-S with adjustable weight for individual comfort

### Kev Seatrout

A rod specially matched to the needs of sea trout spin fishermen. The blank is based on the legendary Kev Float rod series. We have optimised the tip for spin fishing with 28 gram lures. You will feel even the slightest movement of the bait. With the SPORTEX Balance System S-B-S, which ensures perfect balancing of the rod, 1000 casts are as easy as pie.



Fuji, the best for monofilament and multifilament lines

### Kev Carp

This is certainly the most mature carp rod on the market and due to its combination of Kevlar and carbon fibre materials it provides the perfect carp action. It is slightly faster than the typical English carp rod with greater sensitivity and lightness.

#### Configuration:

- Optimised Kevlar and high modular carbon fibre
- SPORTEX Balance System S-B-S
- Fuji SIC guides with high abrasion resistance and maximum heat dissipation, minimum friction
- Fuji reel seat
- High-quality natural cork in premium quality AAA
- Saltwater resistant aluminium cap with nonslip Duplon butt

Model	Art. No.	Model-Name	Length cm	pieces	Transport length	Casts gram	Rod weight			Price* euro
							Tolerance	gram	Guides	
Kev Spin Light	119240	SP 2401	240	2	127	15	8 - 22	155	9	259,00
Kev Spin Light	119270	SP 2701	270	2	145	20	12 - 28	180	9	279,00
Kev Spin	120230	SP 2403	240	2	128	30	25 - 39	190	6	259,00
Kev Spin	120270	SP 2753	275	2	145	30	26 - 40	210	7	269,00
Kev Spin	120300	SP 3053	300	2	160	35	26 - 41	225	7	289,00
Kev Spin	120274	SP 2704	270	2	145	60	43 - 68	210	7	289,00
Kev Spin	120304	SP 3014	300	2	160	60	43 - 68	225	7	319,00
Kev Pike	121270	SP 2755	275	2	145	80	40 - 80	225	7	295,00
Kev Pike	121300	SP 3055	300	2	160	80	40 - 80	250	8	325,00
Kev Sea Spin	121290	SP 2756	275	2	145	100	80 - 110	260	7	325,00
Kev Sea Spin	121310	SP 3056	300	2	160	100	80 - 110	270	8	339,00
Kev Seatrout	123305	SP 3052	305	2	160	28	18 - 35	215	8	339,00
Kev Carp	122370	Kev Carp	366	2	190	2,5 lb	-	300	8	379,00

\*recommended retail price



#### **Carat Z**

The latest generation of specialist spinning rods from the house of SPORTEX. Thanks to Zylon fibres these rods are incomparably supple. They develop a disproportionate amount of power at every stage of the cast or when playing a fish. We build the blanks using our tried and tested HT Crosswinding technology, which results in blanks with a fast but semi-parabolic action that are also incredibly light. Whether using the lightest of spinners for trout and perch or heavy shads for big pike, you will find the perfect rod for every application. The Carat Z is your uncompromising companion for every eventuality.

#### **Carat Z Jig**

Lifeless rods are a thing of the past, thanks to a new generation of Carat Z featherweight jigging rods. This is a perfectly balanced rod for zander, pike and other predators. It has lots of power, a sensible tip and a steely backbone, this rod shows its true metal whilst playing a fish; despite the stiff blank there are no arm shaking thuds, just a supple firmness that tires fish fast.

**ZYLON**



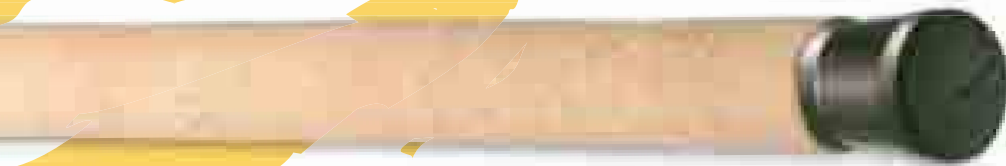
# SPINNING RODS



Carat Z **NEW**

**10 year  
Blank Guarantee**

*Carat Z*



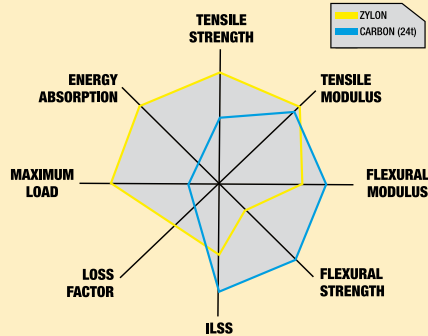
Carat Z Jig **NEW**

## New generation high-end spinning rods containing Zylon

At SPORTEX, rod building means a constant search for new innovative materials. The Carat Z is the first of a new generation of rods manufactured from a composite of high modular carbon fibres and ZYLON, creating a new dimension in fishing rods. This combination of materials not only maintains the rigidity, lightness and speed that is expected of a carbon blank, but combines these characteristics with the tensile strength and power that is typical of Zylon. The result is a fast-action spinning rod with a slim, light blank that is practically indestructible. Our extensive quality requirements regarding materials, components and workmanship are once again clearly evident. Modern, elegant design and the perfected counter-balance system from the TiBoron models accomplish this rod series. Authentic innovations that result in tangible advantages for the angler brought together SPORTEX craftsmanship – that's what SPORTEX Carat Z stands for.

### Configuration:

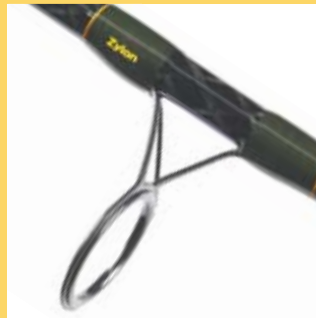
- High-Tec composite ZYLON and HM carbon fibre
- Highly abrasion resistant SIC-rings with the quickest possible heat dissipation – ideal for braided line
- Fuji reel seat
- Integral balancing weights in rod butt
- High quality natural cork rod handle in AAA premium quality



Innovative: integrated balanced weight for an individual feeling



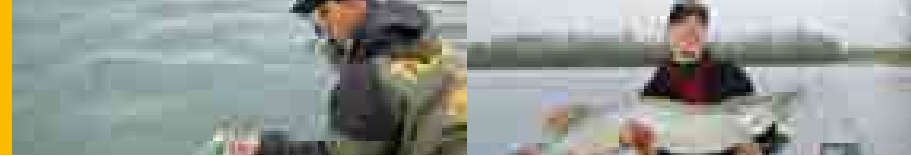
elegant FUJI reel seat



Highend SIC guides, perfect for braided lines

Model	Art. No.	Model-Name	pieces	Transport length	Casts gram	Rod weight gram	Guides	Price* euro		
Carat Z	112210	CA 2100	210	2	109	12	9 - 16	105	6	169,00
Carat Z	112212	CA 2101	210	2	109	25	12 - 33	125	6	179,00
Carat Z	112241	CA 2401	240	2	124	20	14 - 26	140	7	199,00
Carat Z	112242	CA 2402	240	2	124	35	24 - 44	155	7	209,00
Carat Z	112261	CA 2601	265	2	136	20	14 - 25	185	8	209,00
Carat Z	112272	CA 2702	270	2	138,5	35	23 - 44	210	7	229,00
Carat Z	112273	CA 2703	270	2	138,5	50	38 - 64	240	8	245,00
Carat Z	112274	CA 2704	270	2	138,5	65	49 - 75	245	8	254,00
Carat Z	112275	CA 2705	270	2	138,5	80	71 - 93	250	8	259,00
Carat Z	112277	CA 2707	270	2	138,5	110	98 - 128	290	8	264,00
Carat Z	112302	CA 3002	300	2	154	40	32 - 48	270	9	259,00
Carat Z	112303	CA 3003	300	2	154	60	52 - 73	295	8	269,00
Carat Z	112304	CA 3004	300	2	154	75	60 - 84	300	8	272,00
Carat Z	112307	CA 3007	300	2	154	110	98 - 120	320	8	284,00
Carat Z	112337	CA 3307	330	2	169	110	98 - 129	350	8	299,00
Carat Z Jig	112222	CA2712	270	2	138,5	30	25 - 40	235	9	219,00

\*recommended retail price



**Application:**

**Saphir 1**

**Casting weight 15 to 25g**

Light spin fishing for bass, sea trout, zander and asp.

**Saphir 2**

**Casting weight 30 to 45g**

Medium weight spin fishing for zander, pike

**Saphir 3**

**Casting weight 50 to 65g**

Heavy spin fishing for pike, pollock

**Saphir 4**

**Casting weight 70 to 90g**

Heavy spin fishing for cod or pike

**Saphir 7**

**Casting weight 150g**

Heavy spin fishing for big catches, pike, taimen (Danube salmon), catfish, cod

**Saphir Zander**

**Casting weight 30g**

The SAPHIR ZANDER is the ideal rod when fishing with natural bait. The softer tip and the progressive action that travels right through to the rod butt allows the angler to cast and present delicate baits accurately.



SPORTEX Balance System S-B-S with adjustable weight for individual comfort



*HT-Cross Winding*: the perfect power combination of unidirectional HM/IM carbon fibres and cross braces incorporated in the blank



# SPINNING RODS



Saphir 1

Saphir 7

## Saphir rods

### Configuration:

- SPORTEX Balance System S-B-S with nonslip Duplon butt
- High-quality natural cork in premium quality AAA
- SIC guides with high abrasion resistance and maximum heat dissipation, best choice for mono and braided lines
- High-quality carbon reel seat

### Slim, light, with powerful action

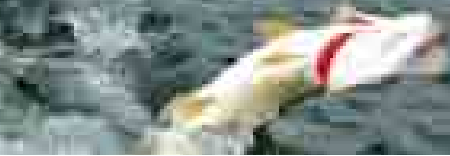
The new SAPHIR rod series fulfils the highest requirements of modern rod building. Slim, light and extremely powerful with semi-parabolic action typical for SPORTEX. These are highly sensitive rods for all areas of light to heavy angling for predatory fish. Building on our established *HT-Cross Winding*-Technology, the Saphir blanks are approx. 20% lighter and thinner due to the use of new generation HM/IM carbon fibres. Despite the reduction in weight, all of the rods offer the same high reserves of power which facilitates maximum input of power during casting, setting the hook and playing the fish. The excellent rod design has been perfected with the new SPORTEX Balance System S-B-S, so the rods sit perfectly balanced in the hand. You will not find so much comfort with any other rod.

Model	Art. No.	Model-Name	Length cm	pieces	Transport length	Casts gram	Tolerance	Rod weight gram	Guides	Price* euro
Saphir 1	191215	SR2151	215	2	115	15	9 - 25	140	7	129,00
Saphir 1	191250	SR2501	250	2	130	20	14 - 29	170	7	149,00
Saphir 1	191275	SR2751	275	2	145	20	16 - 31	185	9	159,00
Saphir 1	191305	SR3051	305	2	158	25	17 - 33	190	9	175,00
Saphir 2	192240	SR2402	240	2	127	35	25 - 41	185	7	145,00
Saphir 2	192275	SR2752	275	2	147	35	25 - 45	205	8	159,00
Saphir 2	192300	SR3002	300	2	158	40	29 - 48	220	9	169,00
Saphir 3	193275	SR2753	275	2	146	50	35 - 59	220	8	179,00
Saphir 3	193305	SR3053	305	2	158	60	41 - 65	220	9	185,00
Saphir 3	193280	SR2803	280	2	147	65	50 - 73	225	8	175,00
Saphir 4	194305	SR3054	305	2	159	75	65 - 89	235	8	195,00
Saphir 7	197280	SR2807	280	2	145	150	90 - 155	275	8	195,00
Saphir 7	197305	SR3057	305	2	159	150	90 - 155	280	7	215,00
Saphir Zander	193330	SZ3302	330	2	178	30	24 - 39	302	7	189,00
Saphir Zander	193310	SZ3102	310	2	168	30	25 - 40	291	7	179,00

\*recommended retail price





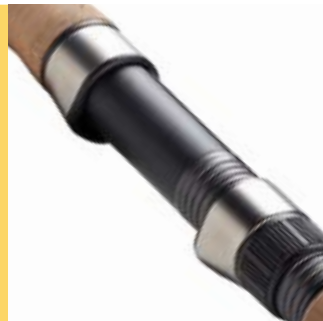


# SPINNING RODS



## Carboflex NG-Ruten

This classic range of rods is available in a variety of casting weights that cover the needs of traditional spin-fishermen and much more. The shorter length rods in lighter casting weights are ideal for boat fishing with light spinners for trout and perch or on narrow streams. The longer rods make ideal bank rods when fishing spoons, spinners and twisters. Those models with casting weights of 40g and above are robust and make excellent pike rods, whether fished from the bank or from a boat. The vertical jigging rod is 2.4m with a casting weight of 40g and if you want to troll then use the 3.10m model with 80g casting weight. The Carboflex NG is also perfect when ledgering or fishing for eels. If you are searching for a bass rod for working spinners and plugs from the coast or indeed a pollacking rod then look no further than the Carboflex NG. At 2,70m and with a casting weight of 60g – 80g, it is the perfect tool. This series really offers a rod for every purpose.



elegant reel seat with metal screwing



Elegant, saltwater resistant metal end cap with SPORTEX engraving

### Guides:

**Casting weight: up to 40g**  
first guide: double leg  
all other guides: single leg

**Casting weight: from 40g**  
all guides double leg

### Configuration:

- Improved HM/IM carbon fibres
- Slender single/double-legged SIC rings with high abrasion resistance and excellent heat dissipation
- Contoured cork rod handle
- Elegant, engraved butt cap

### NG – The New Generation of modern spinning rods

The Carboflex series, now entering its third generation, is made of 100% HM / IM carbon fibre and is in perfect keeping with the SPORTEX tradition. The rods are semi-parabolic and traditionally have reserves of power right into the rod handle, yet evidently slimmer and lighter than ever. Accurate casting over long periods is simple with these light-weight blanks. Classically, premium quality cork handles and a beautifully engraved butt cap ensure a timeless, elegant finish.

Model	Art. No.	Model-Name	Length cm	Transport pieces	Transport length	Casts gram	Tolerance	Rod weight gram	Guides	Price* euro
Carboflex NG	165211	NG 2101	210	2	109	20	15-35	156,8	9	79,90
Carboflex NG	165212	NG 2102	210	2	109	40	35-50	159,5	9	84,90
Carboflex NG	165241	NG 2401	240	2	124	20	15-35	174,5	9	89,90
Carboflex NG	165242	NG 2402	240	2	124	40	35-50	174,5	9	99,90
Carboflex NG	165272	NG 2702	270	2	142	40	35-50	192,6	9	108,90
Carboflex NG	165273	NG 2703	275	2	142	60	45-75	209	9	119,90
Carboflex NG	165275	NG 2705	275	2	142	80	45-75	225,4	9	127,90
Carboflex NG	165277	NG 2707	275	2	142	120	95-130	242,1	9	139,90
Carboflex NG	165302	NG 3002	300	2	157	40	35-50	230	9	123,90
Carboflex NG	165313	NG 3103	310	2	160	60	45-75	268	9	129,90
Carboflex NG	165315	NG 3105	310	2	160	80	65-93	282	9	145,90
Carboflex NG	165312	NG 3152	315	2	160	30	20-40	239,4	9	127,90

\*recommended retail price



## Black Stream rods

### Super slim and extremely fast

Using these rods you will be unbeatable at the water. Not just the look clearly signals SPORTEX. The fine blank transfers every hand movement directly to your bait and signals even the slightest vibrations. The Black Stream rods helps spin anglers to recognise taken straight away and to react quickly. Every detail of this modern rod series corresponds to the best SPORTEX tradition. Thanks to the use of high-quality HM/IM carbon material these rods provide a progressive energy transmission. It is a real gem that fellow anglers will envy.

Model	Art. No.	Model-Name	Length cm	Transport pieces	Transport length	Casts gram	Tolerance	Rod weight gram	Guides	Price* euro
Black Stream	155211	BS 2101	210	2	110	20	15 - 28	130	9	75,00
Black Stream	155241	BS 2401	240	2	120	20	16 - 28	150	9	81,95
Black Stream	155271	BS 2701	270	2	134	20	16 - 30	165	9	89,95
Black Stream	155301	BS 3051	305	2	160	30	21 - 38	205	9	99,95
Black Stream	155242	BS 2402	240	2	121	40	35 - 49	165	9	89,95
Black Stream	155272	BS 2702	270	2	134	40	35 - 53	185	9	99,95
Black Stream	155302	BS 3002	300	2	155	40	36 - 59	210	9	105,00
Black Stream	155243	BS 2403	240	2	121	60	49 - 68	175	9	99,95
Black Stream	155273	BS 2753	275	2	149	60	51 - 70	225	9	109,00
Black Stream	155313	BS 3103	310	2	159	60	51 - 71	230	9	119,00

\*recommended retail price



Light weight  
Duplon split handle

High-quality, minimum weight  
designed sportex engraved metal  
end cap

### Configuration:

- Optimised HM/IM carbon fibres
- SIC guides with perfect heat dissipation, minimum friction
- Elegant, engraved metal end cap
- Modern Duplon split handle

### Application:

**BS 2101, 2401, BS 2701BS**

**Casting weight: 20 g**

With a casting weight of 20 g and lengths of 210cm to 270cm this rod is suited to precision spin fishing from the bank or a boat

**BS 3051, BS 2402,  
BS 2702, BS 3002**

**Casting weight: 30 to 40g**

Spinning rod for medium weight spin fishing from the bank and boat. Designed for catching zander and pike

**BS 2403, BS 2753, BS 3103**

**Casting weight: 60 g**

Exceptional spinning rod for fishing for heavy predatory fish



# SPINNING RODS



## Opal Drop Shot

The new Drop Shot rods are designed for both fishing situations: the short versions for boat fishing, the long versions for fishing from the bank. The rods are built using the highly sensitive SPORTEX Solid Tip System. The whole construction of these rods, from the S-T-S full carbon tips to the slim, sensitive blank, which transfers even the finest vibration to the bait, is designed for maximum sensitivity in bait presentation. Due to the use of high-quality HM/IM carbon fibre material in *HT-Cross Winding* Technology, these rods develop their whole power when playing the fish, so even large zander will be landed safely.

### Configuration: Opal Drop Shot, Jerk, Twitch, Lure

- *HT-Cross Winding*
- Fuji SIC guides/Fuji Low Rider SIC guides
- SPORTEX Balance System S-B-S
- Light, slim spigot joints
- Fuji reel seat
- S-T-S Solid-Tip System (Drop Shot)

## Opal Jerk

### The perfect jerk rod for multi-bait caster reels

Every detail of this rod – from the blank with *HT-Cross Winding* Technology to the Fuji Low-Rider guides and Fuji reel seat – is conceived for jerk bait angling. A continuous stiff action ensures targeted controlled jerking of the bait. These rods are active! They are not just the typical stiff sticks, which slam against the wrists when playing the fish. Thanks to the SPORTEX Balance System S-B-S they sit perfectly balanced in the hand.



SPORTEX Balance System S-B-S with changeable weight

## Opal Twitch

### Designed for playing, twitching and jerking

Until now professional fishing with soft jerks and soft baits was reserved for rods with multi reels. With the Opal Twitch we have designed an excellent rod for spinning reels, which allows for successful presentation of small jerk bait, jigs and small lures. Slim and light, it reacts quickly and transfers every movement of the hand. Playing and light twitching of the bait is really fun with this rod. With the SPORTEX Balance System S-B-S it sits perfectly in the hand.

## Opal Lure

### The soft bait rod par excellence!

At last we offer a soft bait rod for angling with a heavy jig head. This rod not only has a perfect stiff action for the best presentation of heavy shads, but – typically for SPORTEX – also full sensitivity when spinning. The slim blank with *HT-Cross Winding* Technology with a typically quicker SPORTEX action signals every movement of the bait directly. Perfectly balanced due to the S-B-S System, this rod allows many hours of effortless casting.

## Opal Boat Light

### The top rod for light boat angling

For predatory fish anglers who mainly fish from the boat for pike, zander and bass we have developed this precise, highly reactive rod. With its length of 190cm and a casting weight of up to 19g it covers the whole range of light to medium weight predatory fishing from vertical angling to light trolling. Thanks to the responsive tip and the progressively working butt, even the escape of heavy fish can be safely cushioned with a short line in close proximity to the boat.

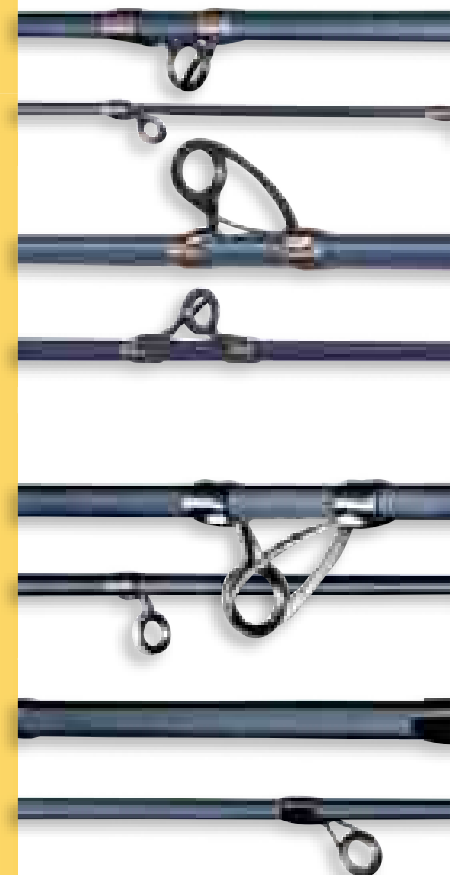
## Opal Boat

### The top rod for medium weight boat angling

With a length of 200cm and a casting weight of up to 30g this all-round boat rod is the ideal pike rod for light trolling or vertical angling. This slim, light rod also has a response-willing tip and a progressively working butt, so that you stand up to each playing of the fish supremely well, even from the shortest distance.

### Configuration: Opal Boat Light, Opal Boat

- Optimised HM carbon fibres and *HT-Cross Winding*
- Fuji SIC guides
- Light, slim spigot joints
- Elegant Fuji reel seat, light and extremely solid
- Duplon split handle
- High-quality, engraved aluminium end cap with nonslip Duplon

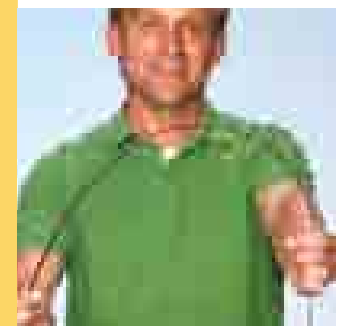


*"It was love at first sight. Rarely did a rod convince me that fast. No matter whether during vertical fishing, spin fishing or fishing with small soft baits – the Opal Boat is a real all-round talent. Short, light, strong and yet very sensitive. In my rod locker, the Opal Boat stands right in the first line."*

Holger Höner,  
editor-in-chief [www.bissclips.tv](http://www.bissclips.tv)



Fuji, the best for monofilament and multifilament lines



S-T-S Solid Tip System (Drop Shot)  
Unbreakable tip for best bait presentation



# SPINNING RODS



Opal Drop Shot

Opal Jerk **NEU**

Opal Boat

Opal Lure

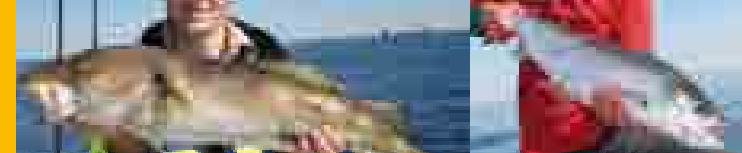
## Opal rods

### Specialised in modern artificial bait

This brand new rod series has been especially developed for the use of both small and large artificial bait of the new generation. The highly specialised rods with super slim and light blanks made from HM carbon fibres in *HT-Cross Winding*-Technology feature innovative handle parts, especially designed for many hours of tireless angling. Super light and very quick, they are extremely durable and their action is perfectly matched to the new fishing methods like jerk-, vertical- or drop-shop fishing. You have constant perfect bait contact, whether you fish at the surface or near the ground. You control your bait movements and when playing the fish you feel the penetrating hook setting power with the help of the active powerful butt. The high-quality Fuji SIC guides are designed particularly for multifilament lines.

Model	Art. No.	Model-Name	Length cm	pieces	Transport length	Casts gram	Tolerance	Rod weight gram	Guides	Price* euro
Opal Drop Shot	135205	DS 2051	205	2	108	10	8 - 19	110	8	139,00
Opal Drop Shot	135235	DS 2351	235	2	122	15	11 - 21	120	9	149,00
Opal Drop Shot	135275	DS 2702	270	2	140	20	13 - 29	185	10	159,00
Opal Drop Shot	135305	DS 3052	305	2	161	20	12 - 25	159	11	179,00
Opal Jerk	113025	JE 2100	198	2	104	65	45 - 70	139	10	159,00
Opal Jerk	113024	JE 2000	185	1 + butt	155	55	38 - 60	128	8	149,00
Opal Jerk	113027	JE 2200	185	1 + butt	185	170	150-190	154	8	169,00
Opal Jerk	113026	JE 2050	195	1 + butt	164	110	90-130	164	8	169,00
Opal Twitch	113022	OT 1800	180	2	93	45	29 - 55	105	8	143,00
Opal Boat Light	113033	VT 2003	190	2	100	19	12 - 22	105	9	139,00
Opal Boat	113055	VT 2005	200	2	105	30	15 - 35	119	10	149,00
Opal Lure	113273	OL 2703	270	2	141	65	40 - 85	248	9	179,00

\*recommended retail price



### Black Arrow

The Black Arrow in lengths of 275 to 365cm with an ideal casting weight of 80g has the SPORTEX-specific semi-parabolic action, which facilitates the sensitive guidance of heavy spoons and twisters. Thanks to the *HT-Cross Winding* technology and the use of high-quality carbon fibre these rods have an extremely fast taper, i.e. the rod does not wind back, so that the bait lands exactly where you want it to. Due to the dynamic power coming all the way down to the butt, you can selectively accelerate the playing of fish, without having to worry that the line will break due to rod overload. These rods are virtually unbreakable even in extreme use in fresh- and saltwater.

### Configuration: Black Arrow

- Optimised high modular carbon fibre and *HT-Cross Winding*
- Fuji SIC guides with high abrasion resistance and maximum heat dissipation
- High-quality carbon Fuji reel seat
- High-quality natural cork handle in premium quality AAA
- Saltwater resistant metal end cap with nonslip Duplon butt

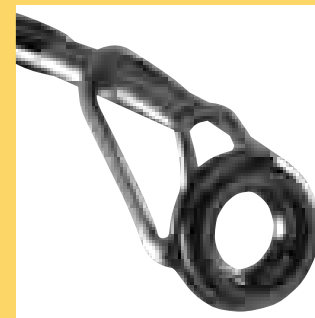
### Huchen de luxe

#### The power rod for the king of freshwater fish

Our entire experience over many years in the manufacture of spinning rods has gone into this excellent rod for Taimen (Danube salmon). It only became possible to develop a spinning rod which facilitates tireless casting for hours and sensitive playing with the fish without the risk of their being released, due to our *HT-Cross Winding* blank technology, for which we only use the best, high modular carbon fibres. In the development we specifically attached importance to the combination of the uncompromising spine and a not-too-hard tip. The use of SIC guides from size 40 to 16 as the last guide, effectively prevents the icing, premature breakage and wear on the line. The handle is made from high-quality natural cork of the premium class AAA and is ergonomically fitted for casting and the playing of the fish.

### Configuration:

- Optimised HM carbon fibres and *HT-Cross Winding*
- SIC guides 40 to 16
- Powerful Fuji reel seat
- Sectioned natural cork handle in premium quality AAA
- Metal end cap gunsmoke with nonslip Duplon butt



Huchen de luxe: The extra large guide on the tip prevents breakage and wear on the line

### Sea Trout

#### The sea trout rod for the coast

Fantastic spinning rod for extremely long casts. This exceptional rod made from high modular carbon in *HT-Cross Winding* Technology sits perfectly balanced in your hand. It is a pleasure to fish the entire day from the shore or a belly boat with a rod which must inevitably result in success. The fast blank with high resilience facilitates extreme distances, accurate casting and a penetrating setting the hook. Everything from the high-quality SIC guides, underarm-length rear handle made from premium class AAA natural cork and the finish of the rod all match the high requirements on a rod designed for use in saltwater.

# SPINNING RODS



## Specialist Rods

### Legendary spinning rod series for big predators

Here we introduce you to speciality models that have been developed for professionals requiring selected rods for certain situations. These classic rods have become an integral part of our sport. They've been favourites amongst top predator anglers for many years, both at sea and on the riverbank.

Black Arrow rods have become a legendary series. Our engineers used these rods as the basis for the Huchen range rods that need to be able to cast heavier weights. These rods were also used as a construction base for both the sea trout rods. Our Huchen Rod also makes an excellent heavy plugging rod when fishing for big pike with large lures, and has larger rings than other rods in the series. For enthusiasts of the modern Twister-angling, we offer the CARAT TWISTER in two length.

### Sea Trout Wind

In material and construction exactly as the Sea Trout, this rod is a bit shorter with a higher casting weight of 38g. Distant casting even with a strong headwind is no problem with this rod. On a trip to the coast it should not be missing.

#### Configuration: Sea Trout, Sea Trout Wind

- Optimised HM carbon fibres and *HT-Cross Winding*
- SIC guides in gunsmoke
- Elegant carbon reel seat, saltwater resistant and very light
- Beautifully shaped natural cork handle in premium quality AAA
- Fine engraved metal end cap

### Carat Twister

Carat Twister, featuring a slightly stiffer tip section, is the right choice when hard-plastic lures or heavier jigs should be presented close to the ground or other obstacles.

#### Configuration:

- SPORTEX Balance System S-B-S with nonslip Duplon butt
- High-quality natural cork in premium quality AAA
- SIC guides with high abrasion resistance and maximum heat dissipation, best choice for mono and braided lines
- High-quality carbon reel seat



Black Arrow:  
SIC guide silicon carbide



High-quality metal end cap with Duplon butt

Model	Art. No.	Model-Name	Length cm	pieces	Transport length	Casts gram	Tolerance	Rod weight gram	Guides	Price* euro
<b>Black Arrow</b>	144290	SP 2743	275	2	145	<b>80</b>	40 - 90	250	7	235,00
<b>Black Arrow</b>	144310	SP 3043	300	2	157	<b>80</b>	40 - 90	250	8	240,00
<b>Black Arrow</b>	144340	SP 3343	340	2	175	<b>80</b>	40 - 90	280	9	250,00
<b>Black Arrow</b>	144370	SP 3643	365	2	189	<b>80</b>	40 - 90	330	10	259,00
<b>Huchen de luxe</b>	108290	TH 2737	275	2	145	<b>138</b>	80 - 150	335	7	199,00
<b>Sea Trout</b>	113028	ST 3251	335	2	174	<b>28</b>	20 - 35	279	9	209,00
<b>Sea Trout Wind</b>	113038	ST 3052	305	2	162	<b>38</b>	25 - 43	275	9	198,00
<b>Carat Twister</b>	135240	TS 2403	240	2	125	<b>40</b>	35 - 45	185	7	149,00
<b>Carat Twister</b>	135290	TS 2803	280	2	145	<b>45</b>	35 - 50	216	7	159,00

\*recommended retail price



# There from



# the beginning!

Many years ago, SPORTEX was one of the first companies to design and make special carp rods for English carp professionals. Since this time SPORTEX has rightly been considered one of the leading suppliers of high-quality carp blanks in the whole of Europe. In close cooperation with carp professionals and specialists legendary rods such as FBC Carp were developed, and set the international benchmark. Today, SPORTEX rods belong to the top class of all carp rods, thanks to the use of the most up-to-date, high-quality carbon fibre materials and the use of the SPORTEX *HT-Cross Winding*-Technology during production. World class carp rods – that's what SPORTEX stands for.





### Brilliant Carp

#### The non plus ultra for the carp professional

The Brilliant Carp rods derived from the legendary SPORTEX Exclusiv Carp, which has been further developed in accordance with the experience and demands of English carp professionals. These rods defined carp professionals, who, equipped with this uncompromising tackle, achieved one record after the other.

**Nomen est omen!** These already legendary carp rods stand out due to their selected fittings, perfect workmanship typical for SPORTEX and a puristic design that enables every carp angler to experience and acknowledge this class of its own! The successful symbiosis of sensitivity and power facilitates significantly longer, more targeted casts and full control during the playing of fish.

#### Configuration:

- Optimised high modular carbon fibre and *HT-Cross Winding*
- Fuji-SIC guides with high abrasion resistance and maximum heat dissipation
- The best Fuji reel seat
- Slim handle with non slip Duplon
- Outstanding finish and design with "brilliant" and engraved SPORTEX metal end cap

### Kev Carp

This probably most mature carp rod on the market has the perfect carp action due to the combination of Kevlar and carbon fibre materials. Fast and with excellent reaction, the Kev Carp has a more parabolic action for maximum power transfer during casting as well as during playing the fish. Besides, this rod is somewhat faster than the typical English carp rods. All this with the highest degree of sensitivity and lightness.



#### Configuration:

- Optimised Kevlar and high modular carbon fibre
- Fuji guides with high abrasion resistance and maximum heat dissipation, minimum friction
- Fuji reel seat
- Duplon butt handle, rear handle made from natural cork in premium quality AAA
- High-quality, engraved metal end cap

"I am fishing the FBC since many years. This rod has accompanied me in every situation without compromise. With the new FBC Carp with *HT-Cross Winding* Technology, I can now get even more distance when casting to reach the important, until now unreachable, spots during a competition. The rod, however, remains very sensitive while playing the fish without simply being too soft. For me, there is no better carp rod."

Gennari Manrico, Managing Director FISHCON S.R.L., Italy

### FBC Carp

#### Fisherman's Best Choice

With this aspiration in mind, we developed a rod series that wrote history. Unbeatable when casting, without unnecessary subsequent whipping but in the typical English style, these rods were and still are the benchmark for success and quality. Starting from blank materials, which conform with the latest expertise in carbon manufacturing, to the refined *HT-Cross Winding* technology and rod building with only the best and most functional components, these rods still set the benchmarks for the fans of traditional English carp rods.

#### Configuration (FBC):

- Optimised HM carbon fibre and *HT-Cross Winding*
- Fuji alconite guides in black with high abrasion resistance and excellent heat dissipation
- Fuji reel seat
- Slim handle with non slip Duplon
- High-quality, engraved metal end cap

### Morion

#### Slim, fast and light

These are the key factors which were in the fore when developing these new carp rods. The result: a dreamlike high-performance blank with unique performance, sensitivity and reaction ability. Due to the SPORTEX *HT-Cross Winding* technology it has enormous power reserves when casting and playing the fish. The Morion rods stand for a brand new generation of SPORTEX carp rods. Long-distance and targeted casting is effortlessly possible. But there is no need to forgo

sensitivity. The SPORTEX test angler were amazed and all agreed: the SPORTEX Morion rods are the new benchmark for carp rods.

#### Configuration:

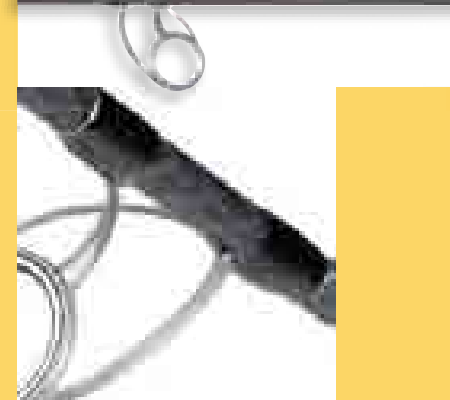
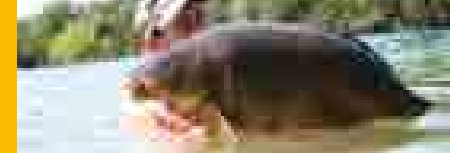
- Optimised HM carbon fibre and *HT-Cross Winding*
- SIC guides with high abrasion resistance and good heat dissipation
- Fuji reel seat
- Slim handle with non slip continuous Duplon
- High-quality, engraved metal end cap

### Morion Stalker

These short "stalking-rods" are ideal for catching carp from bank or boat. As in the other Morion carp rods, the blanks are slender and extremely powerful as a result of our *HT-Cross Winding* process.

#### Configuration:

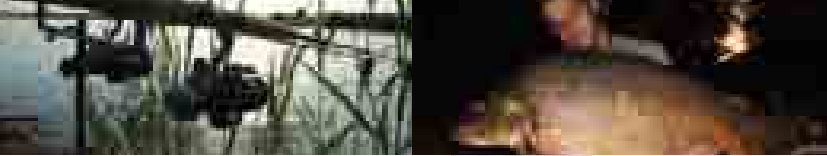
- The same as the Morion rods but with premium quality AAA cork rod handle



Fuji, the best for monofilament and multifilament lines



Fuji, the best reel seat for carp rods



# CARP RODS



Brillant Carp

Kev Carp

FBC Carp

Morion

Morion Stalker **NEW**

Model	Art.No.	Length cm	Length ft	Transport pieces	Transport length	Casts gram	Tolerance	Rod weight gram	Guides	Price* euro
Brillant Carp	142150	365	12	2	189	2,75 lb	-	300	6	349,00
Brillant Carp	142160	365	12	2	189	3 lb	-	305	6	369,00
Brillant Carp	142170	396	13	2	207	3,5 lb	-	400	6	399,00
Kev Carp	122370	366	12	2	190	2,5 lb	-	300	8	379,00
FBC 366/275	141530	366	12	2	189	2,75 lb	-	310	6	289,00
FBC 380/300	141550	380	12,5	2	197	3 lb	-	335	6	298,00
FBC 380/350	141570	380	12,5	2	197	3,5 lb	-	375	6	318,00
Morion	142700	366	12	2	188	2,5	-	280	7	209,00
Morion	142710	366	12	2	188	2,75	-	295	7	229,00
Morion	142720	366	12	2	188	3	-	315	7	249,00
Morion Stalker	142750	330	11	2	172	2,75 lb	-	261	7	199,00
Morion Stalker	142740	300	10	2	154	2,75 lb	-	232,3	7	179,00

## Innovative carp rods for the highest quality demands

Like no other rods, our carp rods combine outstanding design with perfect action. Thanks to high-quality, high modular carbon fibres with *AT-Cross Winding* Technology or optimised Kevlar/high modular carbon fibres, we have been building carp rods sought after by their peers for many decades. The high-quality fittings with the best Fuji components have ensured for aesthetic and very successful hours by the water for many years. Developed from professionals for the professional angler, who does not tolerate any compromise with his tackle.

\*recommended retail price



### Carbon landing net poles

#### One piece, telescopic and unbreakable

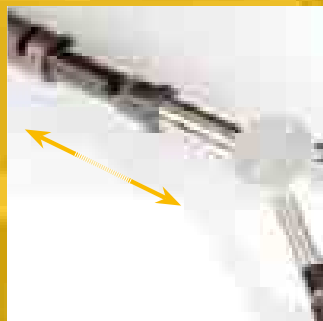
The new type of telescopic landing net poles developed by SPORTEX perfectly combines two functions. Extended to 1.80m it is ideal as a landing net pole to be used from the bank. The highlight is the new adjustment system: when landing, or on the boat the landing net pole can be telescoped together and the "long end" is therefore no longer in the way. The 180cm one-piece landing pole has become legendary. Based on the handle of a Brilliant Carp rod, it is also irreplaceable for the Boilie shovel as a throwing stick. Due to the English screw fitting at the head, a landing net can be easily fitted.

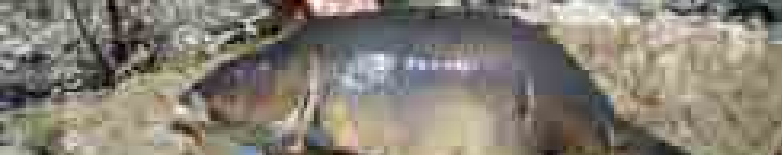
#### Configuration:

- High-strength carbon fibre
- Light, almost unbreakable and slim
- Metal screw fitting for the attachment of all current landing nets

### Landing nets

Both versions of the landing net, 100 x 100cm (42" x 42") and 115 x 115cm (46" x 46"), are made from a fish-protecting, narrow mesh net, produced without knots. It is spread between powerful carbon blanks and can be fitted to the pole with a solid, rust-free stainless steel head. Machined into the stainless steel head are 2 mounting fixtures for chemical lights.





# CARP RODS



Specimen Carp



Carp Classic



Competition Carp **NEW**

## Specimen Carp

### Perfect harmony

With this rod series in modern design we make it easy for SPORTEX newcomers to professional carp angling to be successful from the outset. This version of the Brilliant Carp series too has the best carp action due to the SPORTEX *HT-Cross Winding-Technology*. Semi-parabolic, with a powerful spine and high endurance. The Specimen Carp series conforms to the trend for slimmer and powerful rods.

### Configuration:

- Optimised HM carbon fibre and *HT-Cross Winding*
- SIC guides in gunsmoke with high abrasion resistance and good heat dissipation
- VA ring on the plug-in connection
- Elegant carbon reel seat; light and extremely solid
- Slim handle with non slip Duplon

## Classic Carp

### Classic English action in the best SPORTEX tradition

Classic in action and design, we have developed this rod at the request of many anglers who display commitment to tradition in their angling technique and their tackle, but do not want to forgo modern SPORTEX technology. Fitted with high-quality components, the rod signals competence and inspire confident range. The slim, matt black and very light blank sits very well in the hand and has excellent resilience.

### Configuration:

- Optimised HM carbon technology
- SIC guides in gunsmoke with high abrasion resistance and good heat dissipation
- Fuji reel seat
- Front and rear handle made from natural cork in premium quality AAA
- Fine, engraved metal end cap

## Competition Carp/Spot

### English feeling with SPORTEX perfection

Our Competition Carp shows that a light, slim, high performance rod doesn't have to cost the earth. The rod is perfect for the carp angler who doesn't just want to cast long distances, but also demands a rod that will set the hook safely no matter the distance and allow the angler to enjoy the fight. The Competition Carp provides a lot of enjoyment and it will look really good on your rod pod, too.

### Configuration:

- Robust but light SIC rings for maximum heat dissipation, ideal for mono and braid
- 12' rods first ring # 40
- 13' rods first ring # 50
- Thick walled "flanged" SIC tip-ring
- FUJI Reel seat
- Elegantly engraved butt cap

For our professional carp rods we invariably use Fuji-SIC-guides or the slightly slimmer SIC-gunsmoke-guides. The extremely high heat dissipation of guide inlays made from silicium carbide is the prerequisite that our rods are equally well prepared for the rigorous use of monofilament or braided lines.



Model	Art. No.	Length cm	Length ft	Length pieces	Transport length	Casts gram	Tolerance	Rod weight gram	Guides	Price* euro
Specimen Carp	142600	365	12	2	189	2,75 lb	-	300	7	195,00
Specimen Carp	142610	365	12	2	189	3 lb	-	310	7	209,00
Classic Carp	143150	366	12	2	189	2,75 lb	-	305	8	249,00
Competition Carp	144275	365	12	2	365	2,75 lb	-	282	6	129,00
Competition Carp	144300	365	12	2	365	3 lb	-	295,6	6	139,00
Competition Carp	144325	365	12	2	365	3,25 lb	-	308	6	149,00
Competition Carp	144350	365	12	2	365	3,5 lb	-	322	6	159,00
Competition Carp	144352	395	13	2	365	3,5 lb	-	353	6	169,00
Competition Spot	144552	395	13	2	65	5,5 lb	-	422,5	6	189,00
Kescherstock	145380	180	-	1	180	-	-	200	-	59,00
Kescherstock Tele	145381	180	-	2	101	-	-	470	-	65,00
Kescherkopf 100	145390	100	-	-	-	-	-	-	-	59,00
Kescherkopf 115	145391	115	-	-	-	-	-	-	-	65,00
Kombi 100	145392	-	-	-	-	-	-	-	-	112,95
Kombi 115	145393	-	-	-	-	-	-	-	-	119,95

\* recommended retail price

## Team Waller Boat

The specialist rod for a guaranteed catch

With a length of 275cm and 300cm these rods with their flexible, powerful tips are perfectly designed for playing the fish close to or directly under the boat. It is precisely here that the correct rod action is important, as many rods simply just buckle under and hours of senseless pumping begin. Both SPORTEX boat rods, in contrast, work actively against this at every stage, so that the pumping actually arrives at the catfish.

## Team Waller Boje

The classic stand-up rod

In length, action and casting weight it is exactly tailored to the demands of angling with buoys and pellets-riggings. When it is about not letting the catfish pull

back a single meter, with closed reel brakes, after taking a bite, then a maximum amount of power is needed. This rod, with its enormous energy reserves, delivers this power into the water without loss and is rarely overstrained. The advantages of the *HT-Cross Winding-Technology* are brought fully to bear.

### Configuration:

- Optimised HM carbon fibre and *HT-Cross Winding*
- SIC guides in triangle design
- Guides fitted close together for spinning or trolling reels
- Powerful carbon boat reel seat
- Front handle made from Duplon, strong rear handle made from natural cork in premium quality AAA
- Nylon butt cap with gimbal and protective cap

## Team Waller Spin

Slim, extremely powerful and fast to react

These indomitable rods are hardly heavier than a sturdy pike rod. Due to the semi-parabolic action and the powerful handle you can pit your whole bodyweight against the fish, without fearing a break. The high-quality SIC guides in triangle design are extremely smooth, abrasion-resistant and dissipate heat.

### Configuration:

- Optimised HM carbon fibre and *HT-Cross Winding*
- SIC guides in triangle design with high abrasion resistance and good heat dissipation
- Powerful, high-quality carbon boat reel seat
- Manageable natural cork handle in premium quality AAA
- Nylon butt cap with gimbal and protective cap

## Team Waller Fun

Trendy in design – with an enormous performance

Almost unbreakable, this powerful catfish rod is pure angling fun – with the highest safety. SPORTEX technology at its finest. The blank made from especially developed “woven carbon” fabric works play-safe progressively from the tip to the butt. Strength which no catfish can match. The flexural behaviour of the rod simply means pure fun!

### Configuration:

- Blank made from highly-compressed blended fabric “woven carbon”
- Metal-reinforced spigot joint
- SIC guides
- Heavy-duty reel seat made from anodised solid aluminium
- Three-sectioned ergonomic Duplon handle
- Nylon butt cap with gimbal and protective cap

## Team Waller Baltic Team Waller Wolga

The resurrection of two legends

For decades both of these catfish rods have been synonymous with power and unbreakability. Due to the sustained demand from catfish specialists and Norway anglers we decided to relaunch these rods in a modern design. The action is designed for maximum power input and plays along with everything. These rods are significantly more robust and less sensitive compared to carbon rods. There are reportedly anglers who use these rods as a bench on the boat when drift fishing... this is not recommended however!

### Configuration:

- SPORTEX glass fibre laminate
- Robust offshore guides
- Powerful boat reel seat
- Front handle in Duplon, rear handle in natural cork in premium quality AAA
- Nylon butt cap with gimbal and protective cap



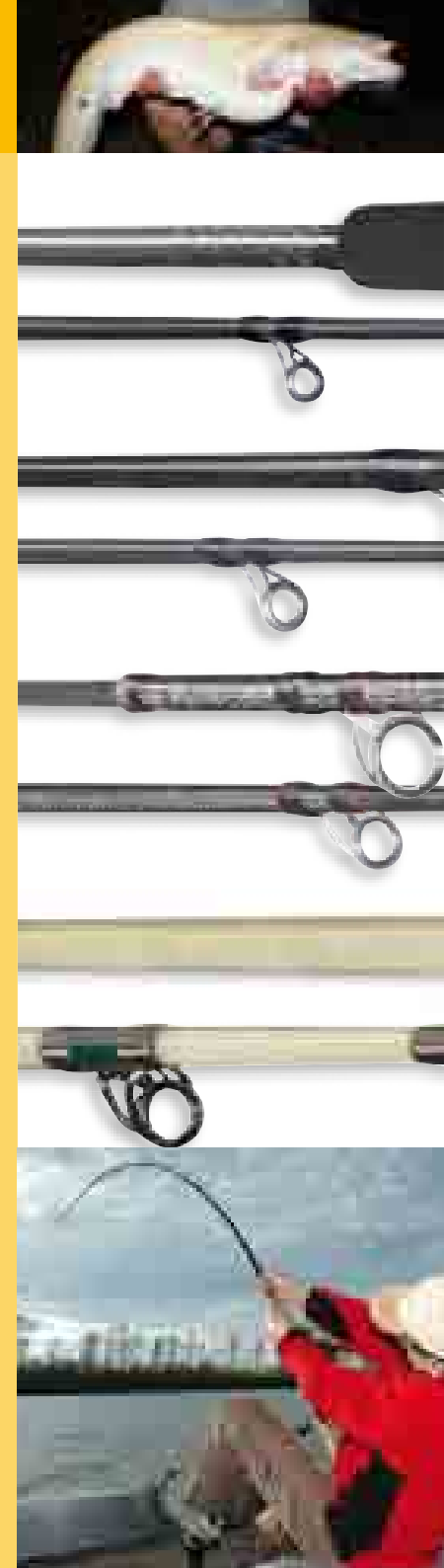
Alconite triangle guides for optimal letting out of the line and minimal friction

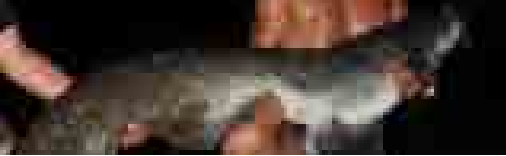


Solit boat guide  
Team Waller Wolga,  
Team Waller Baltic



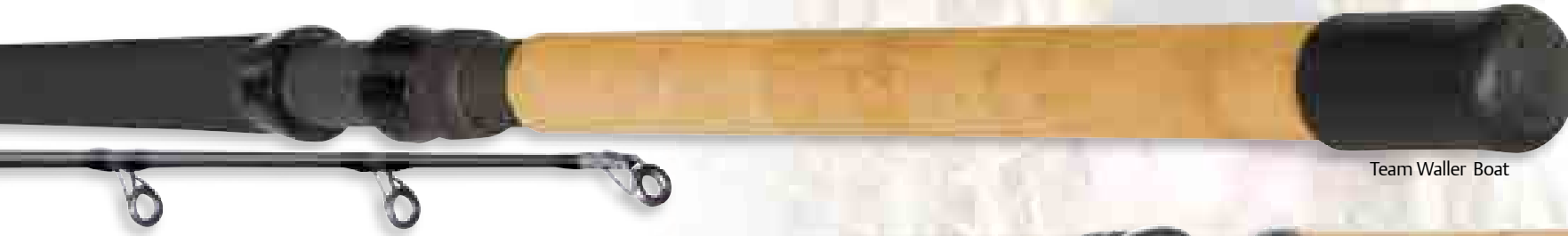
Nylon butt cap with gimbal





# CATFISH RODS

**10 year  
Blank Guarantee**



Team Waller Boat



Team Waller Spin



Team Waller Fun



Team Waller Baltic/Wolga

## Team Waller

Model	Art. No.	Model-Name	Length cm	Transport pieces	length	Casts gram	Tolerance	Rod weight gram	Guides	Price* euro
Team Waller Boat	109280	TW 2709	275	2	187	400	200 - 400	450	9	229,00
Team Waller Boat	109320	TW 3009	305	2	158	400	200 - 400	500	8	239,00
Team Waller Boje	109350	TW 3209	330	2	172	400	300 - 600	570	8	249,00
Team Waller Spin	110260	TW 2818	275	2	146	200	90 - 210	380	9	229,00
Team Waller Spin	110330	TW 3018	300	2	158	200	90 - 210	390	9	239,00
Team Waller Spin	110340	TW 3218	320	2	165	200	90 - 210	405	9	249,00
Team Waller Fun	111290	TW 2909	290	2	149	150 - 300	150 - 300	520	8	139,00
Team Waller Baltic	113230	TW 2355	235	2	175	50 lb	-	700	8	239,00
Team Waller Wolga	113240	TW 2358	235	2	175	80 lb	-	720	8	249,00

\*recommended retail price

### Test the Best!

Under this motto we have been heavily engaged in the development of rods for catfish angling during the last few years and decades. Every catfish angler knows the legendary honey-yellow glass fibre Baltic and Wolga catfish rods of years gone by, which shaped a whole generation of catfish anglers and which can still be found today in many professional catfish camps, where the emphasis is on quality and durability. Building upon these rods, we have created a new rod series together with our angling teams and developers. With high-quality high modular carbon fibre and our SPORTEX *HT-Cross Winding* technology, uniquely powerful and almost unbreakable rods have been created. They cover all areas of boat, ground, pellet and buoy fishing.

## Heavy Feeder

**Powerful for long casts and strong currents**

High-quality, very powerful feeder rods, designed for a casting weight of up to 200 grams. For long casts with large cage feeders and for controlled fishing in strong currents. Despite its powerful construction with high-quality HM/IM carbon material, this rod sits light in the hand. The SPORTEX Heavy Feeder comes with 3 solid carbon fibre tips (2, 2.5 and 3.0 oz.).

### Configuration:

- Optimised HM carbon fibre
- SIC guides
- Elegant Fuji reel seat
- Natural cork handle in premium quality AAA with Duplon front handle
- High-quality, engraved metal end cap

## Medium Feeder

**Universal for still and flowing waters**

This feeder rod series covers all areas of classic coarse fishing in both still and flowing waters. High-quality SIC guides on a slim blank allow for unhindered letting out of line for long casts. Very fast and with powerful reactive ability you can effortlessly reel in large barbel in a current. All Medium Feeder rods are equipped with 3 solid carbon fibre tips (1, 1.5 and 2.0 oz.).

### Configuration:

- Optimised HM carbon fibre
- Slim SIC guides
- High-quality Fuji reel seat
- Natural cork handle in premium quality AAA
- High-quality, engraved metal end cap

## Multi-Picker Swing

**For optimal bite recognition**

With this new type of swing tip rods, SPORTEX offers new generation rods for angling for coarse fish. The unusually slim rod blank made from high-quality HM/IM carbon is extremely light, quick to react with progressive distribution of power when playing the fish. Even carp and large trout cannot resist. The rod comes with a professional swing tip made from silicon tubing with a screw fitting.

### Configuration:

- Optimised HM carbon fibre
- SIC guides
- Swing tip with silicon tubing
- Natural cork handle in premium quality AAA

## Multi-Picker Winkelpicker

**All-rounder for still and flowing waters**

Swift, slim and powerful picker rod with 3 interchangeable picker tips. The blank construction from HM/IM carbon material is completely designed for catching both small and large coarse fish. Powerful during casting and with measured power distribution when playing the fish makes this rod an all-rounder in still water. The rods equipped with 2 solid fibre tips (1 and 1.5 oz.).

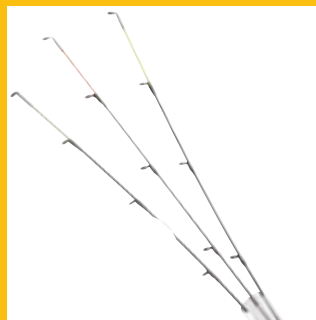
### Configuration:

- Optimised HM carbon fibre
- SIC guides
- 1 solid glass tip and 1 solid carbon tip
- Natural cork handle in premium quality AAA

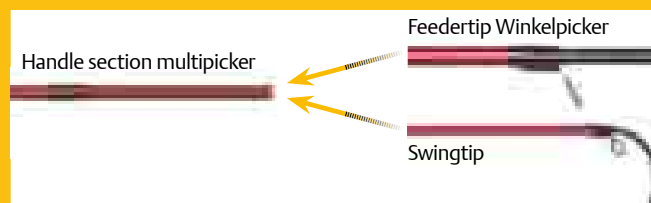
## Multi-Picker Complete

**All-purpose due to 2 complete tip sections including 2 Winkelpicker tips and a swing tip with a common handle section**

Anglers who have devoted themselves to fishing with swing tip and winkle pickers will be thrilled by this rod concept. The Multipicker can be used for both types of angling. The special feature about these Multipickers are the 2 complete tips and the common handle section, which, depending on the tip section, provides easy bite indication.



Highly sensitive, unbreakable feeder tips with large guides for unhindered letting out of line



You combine the handle part with two completely different tips

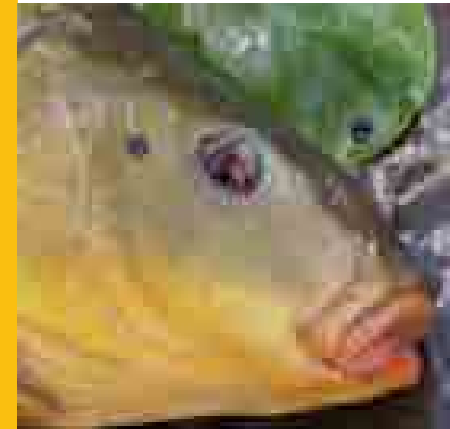
## Extension Feeder

**Universal: for small and large waters**

With this unique development, our anglers are getting their hands on a high-end feeder rod, which can be variably extended from 3.60 to 3.90cm with the aid of an extra extension section. The slim, elegant rod in optimised HM/IM carbon technology has a progressive but fast action which allows for extremely long casts with cage feeders of up to 100g. When playing the fish the rod is absolutely superior. It reacts sensitively to bream and small carp and progressively responds to bigger fish. The rod comes with 3 ultra-sensitive tips with SIC guides for unhindered letting out of the line (1, 2, and 3oz.).

### Configuration:

- Optimised HM/IM carbon fibre
- Slim SIC guides
- Extension blank for the rod
- Front handle made from nonslip, robust Duplon
- Rear handle made from natural cork in premium quality AAA with Duplon butt and high-quality SPORTEX end cap
- 3 feeder tips with visible labelling





# FEEDER AND COARSE ANGLING RODS



Heavy Feeder  
3 tips 2., 2.5, 3 oz.

Medium Feeder  
3 tips 1.5, 2, 2.5 oz.

Extension Feeder  
3 tips 1, 1.5, 2.0 oz.

Multipicker  
2 tips 1 and 1.5 oz.

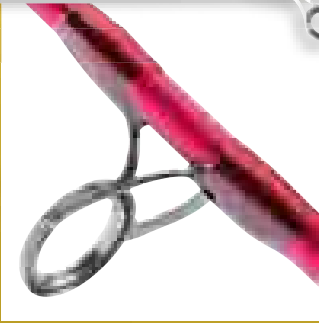
Multipicker Swingtips

Model	Art. No.	Model-Name	Length cm	pieces	Transport length	Casts gram	Tolerance	Rod weight gram	Guides	Price* euro
Heavy Feeder	139420	HF 4209	420	3 + 3	145	140 - 200	140 - 200	355	16	219,00
Medium Feeder	138367	MF 3607	360	3 + 3	130	80 - 140	80 - 140	275	13	179,00
Medium Feeder	138397	MF 3907	390	3 + 3	140	80 - 140	80 - 140	280	13	199,00
Medium Feeder	138427	MF 4207	420	3 + 3	149	80 - 140	80 - 140	320	13	209,00
Multi Picker Swing	139310	LF 3050S	295	2	150	10 - 30	10 - 30	180	13 + 1	198,00
Multi Picker Feeder	139311	LF 3050P	295	3	150	10 - 30	10 - 30	182	12	198,00
Multi Picker Complete	139312	LF 3050C	-	-	-	-	-	-	-	245,00
Extension Feeder	139395	HF 3605	360 / 390	6	125	60 - 100	60 - 100	320	15	219,00

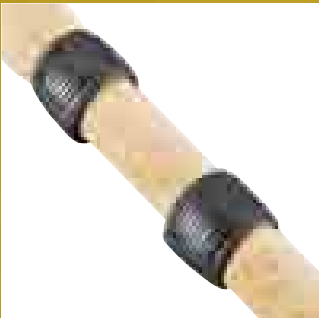
\*recommended retail price

## The perfect Feeder and Coarse rods for large and small waters.

Light, slim and with a unique design, our new Feeder and Picker rods belong to the standard equipment of every ambitious angler. These rods, made from optimized HM/IM carbon fibre technology, are fast in reaction and highly specialized to support the slightest bite indication of the Picker- and Swing-tips. Powerful, yet perfectly balanced, they are perfect for all kind of coarse fish – from little roach to bream, tench or even a larger carp.



SIC guide for good heat dissipation specially suited for braided lines



Sliding reel seat for perfect fit of the reel (Hegene)

**Exclusive Match**

These exclusive and extremely light match rods in 3 parts for professional float and waggler fishing have a slim, very well-balanced blank with high resilience and a very fast, yet fine, tip. The rod construction with excellent SIC match guides effectively prevents the wet line sticking when casting with light wagglers. The extended rear handle made from premium AAA cork allows tireless angling for many hours.

**Configuration:**

- Ultra-light blank construction in HM/IM carbon fibre technology
- Superior SIC match guides
- Light Fuji reel seat
- Slim natural cork grip in high-grade premium quality AAA
- Fine, engraved metal end cap

**Exclusive Trout**

Fine and light still water and Spirolino rods with not-too-hard, but active tips. These rods are designed for use with medium-weight floats and Spirolinos. Due to the fast action setting the hook impacts directly to the fish. For this reason, the Exclusive Trout is gladly used by Hegenen fishermen, in order to fish from the bank with large floats.

**Configuration:**

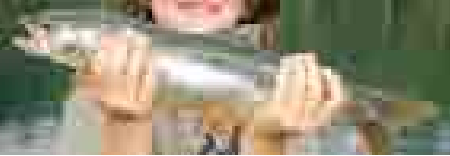
- Transport-friendly three-sectioned
- Light blank construction in HM/IM carbon fibre technology with *HT-Cross Winding*
- SIC guides in gunsmoke with high abrasion resistance and good heat dissipation
- Slim natural cork grip in high-grade premium quality AAA
- High-quality, engraved metal end cap

**Exclusive Float**

The forerunner of this remarkable series of rods was the legendary Exclusive Trout. Decades of experience, and the utilization of the most modern carbon technology, have resulted in our design team coming up with an exceptional model, the Exclusive Float. Much more than a classic match or float rod it is perfect as a heavy float rod for carp fishing, for float fishing dead baits, or even for deep water nymph fishing. All this in a remarkably light weight rod.

**Configuration:**

- Transport-friendly three-sectioned
- Ultra-light blank construction in HM-Carbonfibre technology
- Gunsmoke SIC-guides with high abrasion resistance and good heat dissipation
- Elegant Fuji reel seat
- High quality, engraved metal end cap



# TROUT, MATCH, FLOAT AND "HEGENE" RODS



Exclusive Match

**10 year  
Blank Guarantee**

Exclusive Trout

Hegene 240

Exclusive Float **NEW**

## Hegene

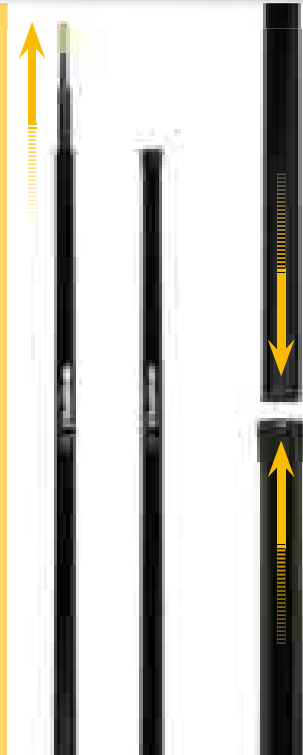
Light, specialised rod for Hegenen fishing. The slim, light blank signals precisely even very cautious bites. This extremely light rod made from HM/IM carbon, is perfectly balanced and fitted with ultra-light SIC guides. The solid cork grip with sliding reel seat allows the mounting of Nottingham reels and spinning reels. The sliding hoods are made from nylon and are minimally elastic to allow the secure mounting of the reel. The weight of the rod is extremely light at only 60 grams.

### Configuration:

- Optimised HM/IM carbon fibre
- SIC guides for minimum friction
- Sliding reel seat – reel seat made from nylon
- Elegantly shaped natural cork handle in premium quality AAA

## Power lifting rod

This telescopic lifting rod – a speciality of SPORTEX for many years – is produced in lengths of 230cm, 340cm and recently with the aid of an extension to 450cm. The lifting rod can be universally used as a pole for landing nets or as a lifting rod for sinking bait fish. Made from high-quality, extremely resilient glass fibre, they are made to be almost unbreakable and are way above the stability and breaking strength of other commercially-available landing net poles. Every landing net with common screw fittings can be fixed to the solid brass head.



## The concept of these rods: finer and more sensitive

Not only with regards to the blank but also regarding components and design, these rods are tailored exactly for their field of application and are therefore uniquely innovative in their respective action. The ultra-light blank construction using HM/IM carbon technology is complemented with best SIC guides, high class and functional reel seats as well as ergonomically formed natural cork handles in premium quality AAA. Extremely sensitive and perfectly balanced these rods allow long, fatigue-proof angling. A pleasure you should not miss out on.

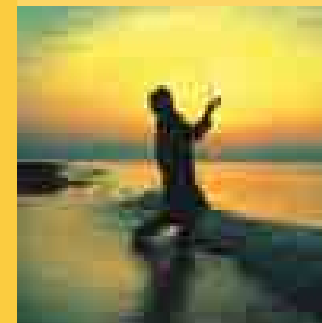
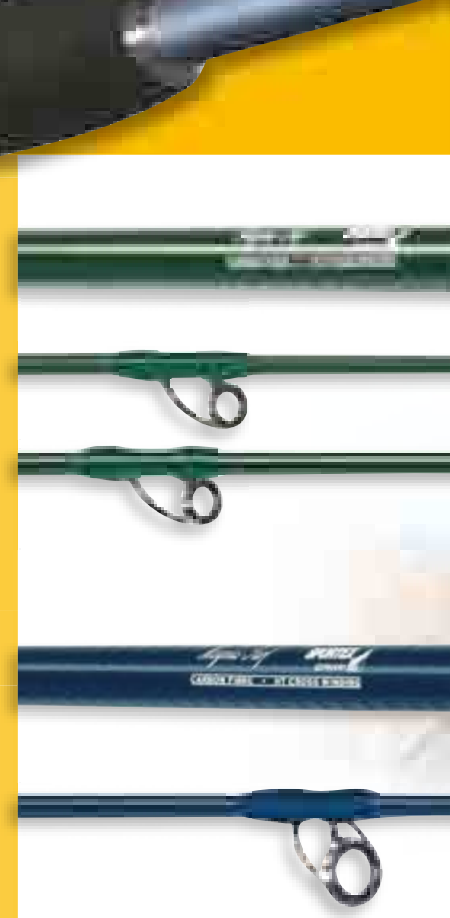
Model	Art. No.	Model-Name	Length cm	pieces	Transport length	Casts gram	Tolerance	Rod weight gram	Guides	Price* euro
Exclusive Trout	136310	GR 3102	310	3	110	30	18 - 38	220	8	195,00
Exclusive Trout	136370	GR 3602	365	3	130	30	18 - 38	265	10	205,00
Exclusive Trout	136400	GR 3902	395	3	139	30	18 - 38	270	10	215,00
Exclusive Match	136421	GR 4212	420	3	155	8 - 16	-	245	13	149,00
Exclusive Match	136391	GR 3942	390	3	135	8 - 16	-	135	13	135,00
Exclusive Float	137365	PF 3652	365	3	127	20 - 40	-	187	12	149,00
Exclusive Float	137395	PF 3952	395	3	138	20 - 40	-	203,8	13	169,00
Exclusive Float	137425	PF 4252	425	3	148	20 - 40	-	236	14	195,00
Lifting rod	127231	TEL 2305	230	2	185	-	-	-	-	59,00
Lifting rod	127341	TEL 3405	340	3	185	-	-	-	-	79,00
Lifting rod	127451	TEL 4505	180	1	185	-	-	-	-	27,00
<b>Extension</b>										
Hegene 240	201240	Hegene 240	240	3	125	-	8 - 25	68	12	139,00

\* recommended retail price



## Powerful with unique action

SPORTEX has been known for decades not only for the construction of indestructible spinning rods. In particular, pilk and boat rods from medium to heavy weights have been part of our core competence for many years. SPORTEX boat rods are among the lightest and best performing sea rods in the world. In addition to our existing sea rod range, we have developed new pilk and boat rods based around the legendary Magnus rods. Powerful and strong, but at the same time light in weight and as thin in diameter as possible – this is what the SPORTEX sea rod range offers you. All components, from the indestructible blank made of HM/IM carbon to the robust saltwater resistant guides and reel seats are particularly designed for the demands of angling in sea water.



# SURFCASTING RODS



Magnus Surf SU 4219 **NEW**

**10 year  
Blank Guarantee**

Magnus Surf SU 4209 **NEW**



Point-to-point connections for easy and special coating for easy assembly.



SPORTEX Balance System S-B-S with adjustable weight for individual comfort

#### Configuration:

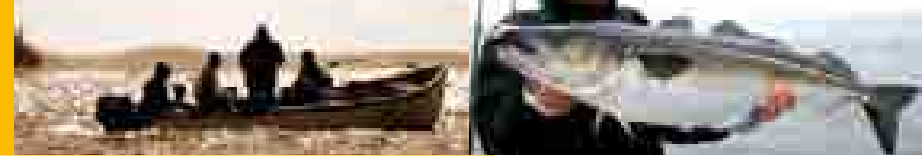
- SU4219 with FUJI foldable reel seat
- SU4219 with FUJI Lowrider rings
- SU4209 with double legged rings
- *HT-Cross Winding* technology
- Screwed balance-weight in butt cap
- Ergonomically formed lower grip
- Florescent whipping at tip for better bite detection
- Point to Point rod connections

#### Magnus SURF – A great tradition – the rod for the beach pro

Beach rods are part of the SPORTEX tradition. Our completely new range of high performance beach rods have been tested, strengthened and refined over a period of 12 months. According to our test anglers, the resulting products are a dream come true! A combination of our *HT-Cross Winding* process and HM carbon fibres have resulted in a stiff but incredibly light rod that weighs less than 500g. The three pieces are connected with “point to point” rod connections that are specially coated to ease assembly. The high-end version with FUJI rings also has an optional softer solid carbon fibre tip section that is ideal for scratching behind the surf line for flatties. This is a true casting machine.

Model	Art. No.	Model-Name	Length cm	Transport pieces	length	Casts gram	Tolerance	Rod weight gram	Guides	Price* euro
Magnus Surf	113429	SU 4209	420	3	149	150 - 250	-	450,6	6	289,00
Magnus Surf	113428	SU 4219	420	3	149	150 - 250	-	454,1	7	369,00
Magnus Surf	113247	SU 4216	-	1	-	-	-	-	-	115,00

\*recommended retail price



## Magnus Boat

The next generation of sea rods for superior fishing

These rods represent the latest development of our successful sea rod series that were purely made to bear all challenges of modern and effective sea fishing. At the same time we have improved their sensibility for better bait control and could meliorate their spine and action for precise casting and ever unfailing landing of big fish. All components, such as at their first-class lacquering, their robust guides, powerful reel seats and ergonomic, resilient handles, are fully designed to pass roughest saltwater conditions with distinction.

### Configuration Magnus:

- Optimised HM/IM carbon fibre and *HT-Cross Winding*
- SIC-Boatguides, saltwater resistant
- Robust reel seat
- Oversized non flip Duplon handle
- Nylon butt cap with gimbal and protective cap

## Black Ocean

Our absolute top pilk rod with maximum feeling for bait and catch.

Slim, extremely powerful with excellent action when casting and playing the fish, these sea rods are hardly heavier than a sturdy pike rod. Due to the semi-parabolic action of the blank with SPORTEX's own *HT-Cross Winding-Technology* you can pit your whole body-weight against the fish. The high-quality SIC guides in a triangle design are extremely smooth, abrasion-resistant and heat-dissipating, so that even constant use with multifilament lines poses no problem.

### Configuration:

- Optimised HM carbon fibre and *HT-Cross Winding* in butt section
- SIC guides in a triangle design with high abrasion resistance and good heat dissipation; saltwater resistant
- Powerful, high-quality reel seat
- Duplon front handle
- High-quality natural cork handle in premium quality AAA
- Nylon butt cap with gimbal and protective cap

## Magnus Fun

Light and relentlessly powerful

Based on our worldwide successful offshore sea rod series, we have developed a lighter, but powerful rod in weight classes from 12 to 20lb, especially for our offshore fans, e.g. in Norway or Iceland. With a length of 200cm and a transport length of just 67cm, this rod easily fits inside airline luggage. The sensitive tip makes playing the fish fun even with small pollock. When it comes to it, the Magnus Fun has enormous power reserves, even for halibut.

### Configuration:

- Optimised HM carbon fibre in combination with fibre glass
- SIC boat guides; saltwater resistant
- Split boat reel seat made from solid aluminium
- Saltwater resistant Duplon grip
- Nylon butt cap with gimbal and protective cap

## Magnus Inliner

The perfect combination of strength, action and comfort

Guide-less fun and a fantastic action, which, according to our Norwegian test fishermen, they know from no other rod. With this new generation of inliners we have eradicated the disadvantages of normal guide-less rods. Through an innovative, continuous guidance system integrated in the blank, the line leads along the whole length of the blank without interrupting the action curve. With these SPORTEX inliners there are no clattering from loose ring insets or grinding of the line inside the carbon. The continuous line guidance system with SIC is integrated into the carbon. The open line lead guide makes the threading of the line easier. These rods of course have the *HT-Cross Winding-Technology* for more controlled strength, typical for SPORTEX.

### Configuration:

- *HT-Cross Winding*
- SIC guides; saltwater resistant
- High-strength aluminium reel seat
- Gimbal with special end cap made from nonslip Duplon
- Inliner tip guide + line lead guide
- Inliner reel seat



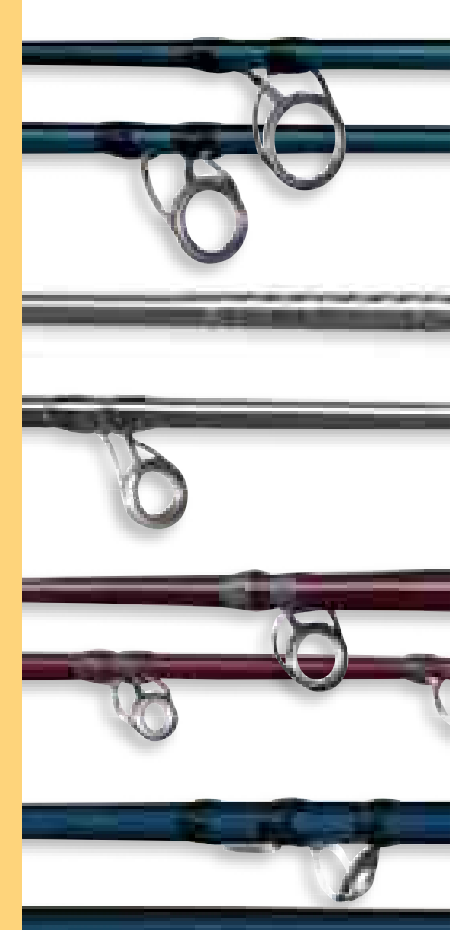
Open line lead guide for easy mounting of the line



Nylon butt cap with gimbal and protective cap



Inliner reel seat

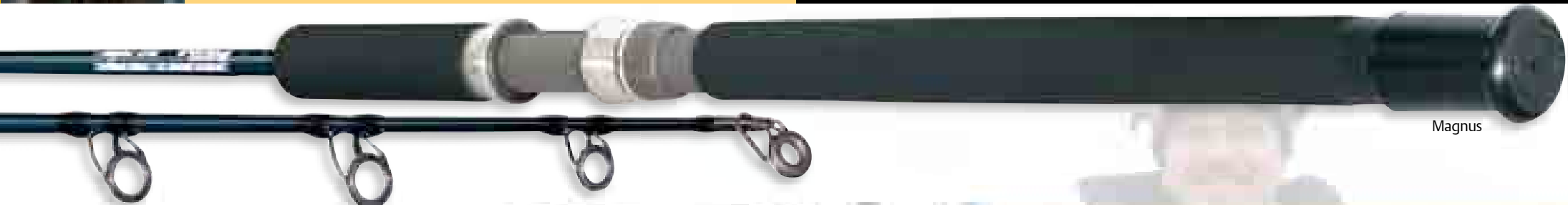


**10 year  
Blank Guarantee**





# BOAT, JIGGING AND SEA RODS



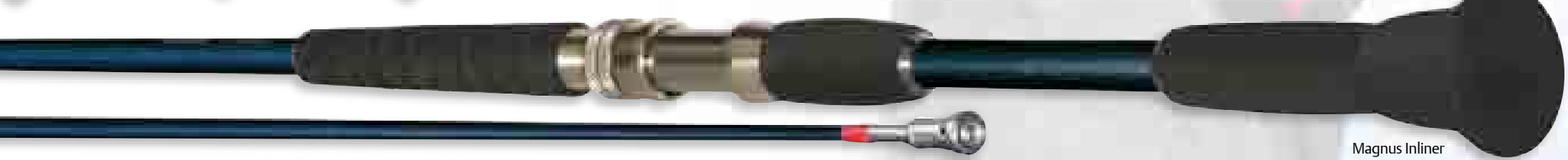
Magnus



Black Ocean



Magnus Fun



Magnus Inliner

Model	Art. No.	Model-Name	Length cm	Transport pieces	Cast length	Cast gram	Tolerance	Rod weight gram	Guides	Price* euro
Magnus Boat	113021	BT 2120	215	2	114	20 lb	bis 150	309	7	149,00
Magnus Boat	113030	BT 2130	215	2	114	30 lb	bis 250	315	7	153,00
Magnus Boat	113050	BT 2150	215	2	114	50 lb	bis 390	325	7	159,00
Black Ocean	111240	BO 2428	240	2	127	110 - 205	110 - 205	349	8	209,00
Black Ocean	111280	BO 2828	275	2	147	110 - 205	110 - 205	379	9	229,00
Magnus Fun	113012	BT 2112	200	3	85	12 - 20 lb	bis 180	470	8	119,00
Magnus Inliner	113130	BI 2430	240	2	128	30 lb	bis 250	390	2	165,00
Magnus Inliner	113150	BI 2450	240	2 (uptight)	175	50 lb	bis 450	415	2	179,00
Magnus Inliner	113278	BI 2708	270	2	145	150 - 250	150 - 250	400	2	175,00

## High class sea rods for discerning anglers

All of our Magnus series rods are categorically designed to fulfil the requirements of the modern sea angler. If you are looking for the perfect rod for fishing Norwegian or Icelandic waters, then you'll find it here. The blanks are of particularly robust construction, but certainly not clumsy or heavy. They are in every respect real power houses and have hard-wearing components resistant to the rigors of a life at sea. If you choose a SPORTEX Magnus or Black Ocean rod you can be sure you are making the right choice. The next pollack, cod or halibut is waiting for you...

High quality rods for the discerning angler

\*recommended retail price



### Seastar Pilk

**Seastar-rods – the perfect combination of performance, quality and price**

Saltwater anglers, who do not specialize in fishing for tuna or sailfish, will be enthused by these new rods. Their handling is extremely easy and these rods are enormously powerful when playing cod, ling and others. Like all SPORTEX saltwater rods, the complete configuration of these rods is designed for robustness and saltwater capability. No matter whether you fish from the cutter, boat or mole, the Seastar Pilk rods are perfectly suited.

#### Configuration Seastar Pilk:

- Blank in optimised HM/IM carbon technology
- Saltwater resistant SIC guides
- Saltwater resistant aluminium reel seat
- Duplon handle with ergonomically shaped front handle
- Engraved metal end cap in gunsmoke with nonslip Duplon

### Seastar Boat

**A boat rod with the emphasis on action and with a distinctive design**

Whether for cod, ling or halibut, you will find exactly the right weight class in this boat rod series. Tough, but not “stiff-as-a-broomstick” as usual, these rods play an active part in playing the fish due to their excellent action. With your Seastar Boat you will always have a high amount of attention, not just because of its superior performance, but also in particular because of the striking design.

#### Configuration:

- Blank made from optimised HM carbon fibre
- SIC high sea boat guides; saltwater resistant
- Saltwater resistant solid aluminium boat reel seat
- Non-sensitive Duplon handle with ergonomic front handle shape
- Nylon butt cap with gimbal and protective cap

### Seastar Travel

**With just 60cm transport length the perfect rod for trips abroad**

The short transport length of our Travel fishing rod, just 60cm in length, has made many friends throughout Europe. In addition to the already available Travel models of up to 160g we developed a lighter 100g version this year. Both rods are ideal for fishing trips abroad and at home with a total length of 270cm and a casting weight of 80g to 100g and 90g to 160g for fishing large fish on all seas or at home for zander, pike and cod. The split, saltwater-proof Duplon grip, a special SPORTEX development with an ergonomic front handle, is designed for hours of effortless angling. Thanks to a completely new development of the blank in HM Carbon Technology, we can guarantee an absolutely harmonious action curve, despite the rod coming in 5 parts. The energy is optimally distributed throughout the rod.

#### Configuration:

- 5 pieces with 60 cm transport length
- Optimised handle concept with advanced front handle for heavy reeling
- Blank in optimised HM carbon technology
- SIC guides; saltwater resistant
- Saltwater resistant reel seat
- Sectioned Duplon handle
- Metal end cap in gunsmoke with nonslip Duplon
- **Matching SPORTEX Travel transport tube!**



Seastar Pilk: Ergonomic Duplon handle for maximum use of power

### Seastar Trolling

This new range of light-weight trolling rods has been designed to be fished with downriggers, sideplaners or indeed without any trolling aids. Even though we've utilised top quality carbon in the rod tip, it is remarkably flexible. But the really special thing about this rod is the progressive action. The power develops steadily from the butt to the tip without the rod tip becoming unstable. If you are trolling deep for big salmon, giant cod or feroc trout, then this is the rod to have with you.

#### Configuration:

- IM carbon fibre blank with parabolic action
- SIC rings with saltwater resistant coating
- Rod rings under-whipped for extra stability
- Lengthened front rod handle for the toughest fight
- Rod butt fitted with gimbal and rubber cap



Seastar Travel: Solid, saltwater resistant boat reel seat



**10 year  
Blank Guarantee**

# BOAT, JIGGING AND SEA RODS



Seastar Pilk



Seastar Boat



Seastar Travel



Seastar Trolling **NEW**

Model	Art. No.	Model-Name	Length cm	pieces	Transport length	Casts gram	Tolerance	Rod weight gram	Guides	Price* euro
Seastar Pilk	117246	SE 2406	240	2	126	50 - 120	50 - 120	250	6	89,00
Seastar Pilk	117276	SE 2706	270	2	141	50 - 120	50 - 120	305	7	95,00
Seastar Pilk	117306	SE 3006	300	2	156	50 - 120	50 - 120	310	7	99,00
Seastar Pilk	117278	SE 2708	270	2	141	100 - 200	100 - 200	290	7	99,00
Seastar Pilk	117308	SE 3008	300	2	156	100 - 200	100 - 200	340	7	109,00
Seastar Pilk	117338	SE 3308	330	2	171	100 - 200	100 - 200	385	7	125,00
Seastar Boat	116210	SE 2150	210	2	140	50 lb	up to 500	490	8	119,00
Seastar Boat	116241	SE 2430	240	2	166	30 lb	up to 250	480	9	119,00
Seastar Boat	116240	SE 2420	240	2	167	20 lb	up to 150	440	9	114,00
Seastar Travel	117273	SE 2715	270	5	60	80 - 100	80 - 100	210	9	94,00
Seastar Travel	117274	SE 2725	270	5	60	90 - 160	90 - 160	210	9	98,00
Seastar Trolling	117120	SE 1821	180	2	98	15 - 20 lbs	-	333	7	89,90
Seastar Trolling	117220	SE 2421	240	2	127	15 - 20 lbs	-	410	10	99,90
Seastar Trolling	117320	SE 2721	270	2	141	15 - 20 lbs	-	431	11	106,95

## Seastar Rods, the perfect combination of price, performance and quality

These sea rods don't have to worry about being compared to their big brothers in the Magnus series. The pilking rods are available in lighter 50g -120g versions as well as in 100g – 200g casting weights. The increase in demand for trolling rods, in particular in the Baltic where big salmon, cod and sea trout are the quarry, has led us to develop a completely new range of rods in three different lengths that guarantee lots of fun with fighting fish. Travelling anglers don't go short either. We've developed a range of excellent five piece TRAVEL rods that have progressive action, even though they are so easy to transport.

\*recommended retail price

# SPORTEX SUPER SAFE Rod Cases



You want to protect your valuable rods and reels securely from damage!  
The SPORTEX Super Safe cases are not only practical and roomy, they provide double protection in comparison with other bags. On the one hand by means of a flexible, attached inner shell made of shock-resistant PVC, on the other by means of a waterproof, abrasion-resistant outer surface made of 600 D polyester woven fabric. The fitting with robust, corrosion-protected metal zip fasteners, padded interior sections and padded shoulder straps is typically SPORTEX functional and designed for many years' use. All large bags additionally have a new and easy-to-use rucksack function, that facilitates the transportation of your rods even more. In addition, all of the bags have a practical fitting for hanging up your bags. Each SPORTEX case is an ID for your valuation of your passion.



The large bags have a handy rucksack function, that makes carrying your rods much easier.



## SPORTEX SUPER SAFE-Technology for perfect protection of rods and reels



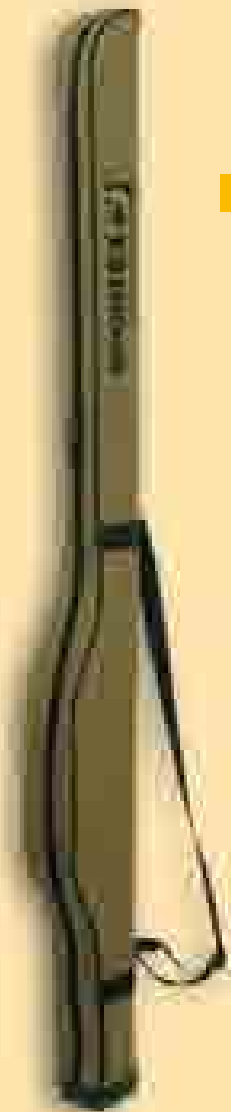
600 D non-rip and waterproof polyester fibre layer

Shock-resistant and flexible PVC hard shell

Air-cushioned cellular membrane

Smooth and tear-proof SPX-lining

# SUPER SAFE Rod Cases



I



II



III



IV



Solid and noncorrosive steel zippers

## Rod bag SUPER SAFE

for 1 rigged rod.

The perfect protection for your rod.

**NEW** – practical rucksack function

## Rod bag SUPER SAFE

for 2 rigged rods.

Elaborate SUPER SAFE rod case with padded inner sections.

**NEW** – practical rucksack function

## Rod bag SUPER SAFE

with 3 compartments for 3 rigged or several unrigged rods.

Outstanding padded lining for total reliability. Padded shoulder strap and high-quality zip fasteners as for all SUPER SAFE models.

**NEW** – practical rucksack function

## XXL rod bag

for 4 rigged or several unrigged rods.

Three well-lined inner sections. A real safe for your valuable rods.

**NEW** – practical rucksack function

Art. No.	Description	Trays	Length cm	Price* euro
I	301125 Super Safe bags	1 tray for rigged rod	125	29,95
I	301145 Super Safe bags	1 tray for rigged rod	145	35,95
I	301165 Super Safe bags	1 tray for rigged rod	165	39,95
II	302150 Super Safe bags	2 trays for rigged rods	150	52,95
II	302165 Super Safe bags	2 trays for rigged rods	165	57,50
II	302180 Super Safe bags	2 trays for rigged rods	180	62,50
III	303150 Super Safe bags	3 trays for rigged rods	150	69,95
III	303175 Super Safe bags	3 trays for rigged rods	175	76,95
III	303190 Super Safe bags	3 trays for rigged rods	190	85,95
IV	304165 Super Safe bags	4 trays for rigged rods	165	97,95

\*recommended retail price

# SPORTEX SUPER SAFE Rod Cases



V

**Rod bag with 2 trays**  
for 2-4 rigged rods.

The SUPER SAFE Multi-talent with 2 trays for ready rigged telescopic or standard rods. Long outside bag for net, umbrella, etc... and 2 extra tool bags.  
**NEW** – practical rucksack function



VI

**The perfect SUPER SAFE rod tube**  
It is part of an angler's basic equipment. You cannot protect your rod in a better way.

**SUPER SAFE Soft bag**  
for one rigged rod.

These soft rod cases in 5 different lengths, with an outer surface made of abrasion-resistant 600 D material, are outstandingly manufactured and protect your high-quality rods.



VII

**SUPER SAFE Rod tube**  
for one rigged rod.

Tried and tested improvement was our motto for this rod transport tube. SUPER SAFE by SPORTEX is the perfect protection for your high-quality, rigged spinning rods. The SUPER SAFE lining is padded on the inside. An integrated, special reel box facilitates the insertion of the complete assembled rod. At home, simply hang your assembled equipment by the hooks. Perfect!



VIII



IX

**SUPER SAFE Carp rod case**

Professional carp bags made from the SPORTEX Super Safe material. For up to 4 rigged carp rods fit perfectly into this bag. Your precious carp rods are especially safe, owing to the shock-resistant PVC-membrane and the really good and strong cushion-membrane. Thanks to the helpful rucksack function, these bags – even fully loaded – are easy to carry.

shock-resistant  
PVC-membrane

# SUPER SAFE Rod Cases



Art. No.	Description	Trays	Length cm	Price* euro
<b>Rod bags</b>				
V	307150 Super Safe Rod bags	2 trays 2 - 4 rigged rods	150	66,50
V	307165 Super Safe Rod bags	2 trays 2 - 4 rigged rods	165	71,95
V	307190 Super Safe Rod bags	2 trays 2 - 4 rigged rods	190	77,50
<b>Rod tube</b>				
VI	305150 Rod tube	Rod tube for 1 rod	150	19,95
VI	305165 Rod tube	Rod tube for 1 rod	165	23,95
<b>Soft bag</b>				
VII	309125 Soft bag	Soft bag for 1 rigged rod	125	17,95
VII	309145 Soft bag	Soft bag for 1 rigged rod	145	19,95
VII	309160 Soft bag	Soft bag for 1 rigged rod	160	21,50
VII	309175 Soft bag	Soft bag for 1 rigged rod	175	23,50
VII	309190 Soft bag	Soft bag for 1 rigged rod	190	24,95
<b>Rod tube</b>				
VIII	308150 Rod tube	Rod tube for 1 rigged rod	150	39,95
VIII	308165 Rod tube	Rod tube for 1 rigged rod	165	44,95
<b>Rod case</b>				
IX	310190 Carp rod case	for up to 4 rigged rods 12'	192	129,95
IX	310205 Carp rod case	for up to 4 rigged rods 13'	209	139,95

\*recommended retail price